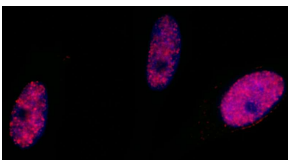


## Anti-SMC1A (phospho Ser966) Antibody (A295220)

### Specifications:

Name:	Anti-SMC1A (phospho Ser966) Antibody
Description:	Rabbit polyclonal antibody to SMC1A (phospho Ser966).
Applications:	WB, IP, IHC, ICC/IF
Recommended Dilutions:	ICC/IF: 1:500-1:5,000, IHC: 1:1,000-1:5,000, IP: 2-5 µg / 1 mg lysate, WB: 1:2,000-1:10,000
Reactivity:	Human
Immunogen:	Phosphorylated synthetic peptide around Serine 966 of human SMC1A (NP_006297. 2).
Host:	Rabbit
Clonality:	Polyclonal
Isotype:	IgG
Conjugate:	Unconjugated
Purification:	Antigen affinity purification.
Concentration:	1 mg/ml
Product Form:	Liquid
Formulation:	Supplied in Tris-Citrate/Phosphate Buffer, pH 7-8, with 0.09% Sodium Azide.
Storage:	Shipped at 4°C. Upon delivery aliquot and store at -20°C. Avoid freeze / thaw cycles.
General Notes:	This antibody was affinity purified using the immunising peptide immobilized on solid support. Immunoglobulin concentration was determined by extinction coefficient: absorbance at 280 nm of 1.4 equals 1.0 mg of IgG.
Disclaimer:	This product is for research use only. It is not intended for diagnostic or therapeutic use.

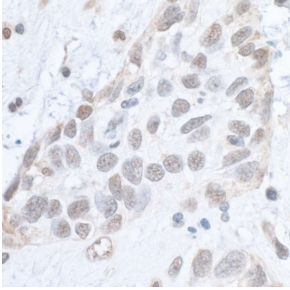
### Images:



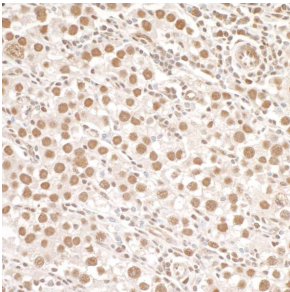
Samples: Neocarzinostatin treated asynchronous HeLa cells. Antibody: Anti-SMC1A (phospho Ser966) Antibody (A295220) was used at a dilution of 1:5,000 (0.2 µg/ml). Detection: Red fluorescent Anti-rabbit IgG-DyLight® 594 conjugated used at a dilution of 1:100.

## Anti-SMC1A (phospho Ser966) Antibody (A295220)

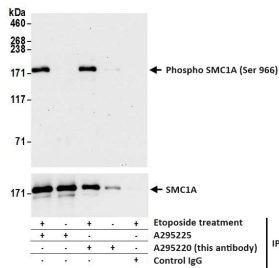
Images continued:



Sample: FFPE section of human breast carcinoma. Antibody: Anti-SMC1A (phospho Ser966) Antibody (A295220) was used at a dilution of 1:1,000 (1 µg/ml). Detection: DAB.



Sample: FFPE section of human testicular seminoma. Antibody: Anti-SMC1A (phospho Ser966) Antibody (A295220) was used at a dilution of 1:1,000 (1 µg/ml). Detection: DAB.



Samples: Whole cell lysate (1.0 mg per IP reaction; 20% of IP loaded) from Jurkat cells treated with 100 µM etoposide (+) or mock treated (-). Antibodies: Anti-SMC1A (phospho Ser966) Antibody (A295220) was used for IP at 3 µl per reaction. Phospho SMC1A (Ser966) was also immunoprecipitated using A295225. For blotting immunoprecipitated Phospho SMC1 (Ser966), Anti-SMC1A (phospho Ser966) Antibody (A295220) was used at 1 µg/ml. Detection: Chemiluminescence with an exposure time of 3 minutes. For detection of total SMC1A, A295225 was used.