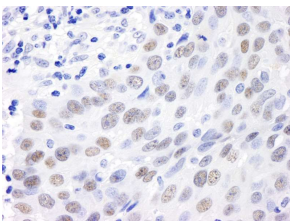


Anti-MDC1 Antibody (A295223)

Specifications:

Name:	Anti-MDC1 Antibody
Description:	Rabbit polyclonal antibody to MDC1.
Applications:	WB, IP, IHC
Recommended Dilutions:	IHC: 1:500-1:2,000, IP: 2-5 µg / 1 mg lysate, WB: 1:5,000-1:25,000
Reactivity:	Human
Immunogen:	Synthetic peptide within amino acids 1375-1425 of human MDC1 (NP_055456. 1).
Host:	Rabbit
Clonality:	Polyclonal
Isotype:	IgG
Conjugate:	Unconjugated
Purification:	Antigen affinity purification.
Concentration:	1 mg/ml
Product Form:	Liquid
Formulation:	Supplied in Tris-Citrate/Phosphate Buffer, pH 7-8, with 0.09% Sodium Azide.
Storage:	Shipped at 4°C. Upon delivery aliquot and store at -20°C. Avoid freeze / thaw cycles.
General Notes:	This antibody was affinity purified using the immunising peptide immobilized on solid support. Immunoglobulin concentration was determined by extinction coefficient: absorbance at 280 nm of 1.4 equals 1.0 mg of IgG.
Disclaimer:	This product is for research use only. It is not intended for diagnostic or therapeutic use.

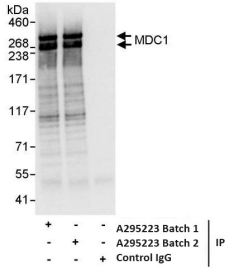
Images:



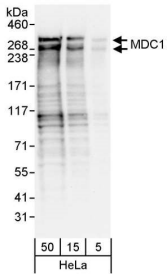
Sample: FFPE section of human breast carcinoma. Antibody: Anti-MDC1 Antibody (A295223) was used at a dilution of 1:1,000 (1 µg/ml). Detection: DAB.

Anti-MDC1 Antibody (A295223)

Images continued:



Samples: Whole cell lysate (1 mg for IP, 20% of IP loaded) from HeLa cells. Antibodies: Anti-MDC1 Antibody (A295223) was used at 1 $\mu\text{g}/\text{ml}$ for WB and used for IP at 3 $\mu\text{g}/\text{mg}$ lysate. MDC1 was also immunoprecipitated by another lot of Anti-MDC1 Antibody (A295223). Detection: Chemiluminescence with exposure time of 3 seconds.



Samples: Whole cell lysate (5, 15 and 50 μg) from HeLa cells. Antibodies: Anti-MDC1 Antibody (A295223) was used at 0.1 $\mu\text{g}/\text{ml}$. Detection: Chemiluminescence with exposure time of 10 seconds.