

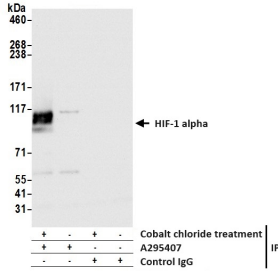
## Anti-HIF-1 alpha Antibody (A295407)

### Specifications:

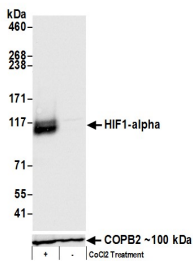
Name:	Anti-HIF-1 alpha Antibody
Description:	Rabbit polyclonal antibody to HIF-1 alpha.
Applications:	WB, IP, IHC, ICC/IF
Recommended Dilutions:	ICC/IF: 1:100-1:500, IHC: 1:100-1:500, IP: 2-10 µg / 1 mg lysate, WB: 1:2,000-1:10,000
Reactivity:	Human, Mouse
Immunogen:	Synthetic peptide within amino acids 775 and the C-terminus of human HIF-1 alpha.
Host:	Rabbit
Clonality:	Polyclonal
Isotype:	IgG
Conjugate:	Unconjugated
Purification:	Antigen affinity purification.
Concentration:	200 µg/ml
Product Form:	Liquid
Formulation:	Supplied in Tris-Buffered Saline with 0.1% BSA and 0.09% Sodium Azide.
Storage:	Shipped at 4°C. Upon delivery aliquot and store at -20°C. Avoid freeze / thaw cycles.
General Notes:	This antibody was affinity purified using the immunising peptide immobilized on solid support. Immunoglobulin concentration was determined by extinction coefficient: absorbance at 280 nm of 1.4 equals 1.0 mg of IgG.
Disclaimer:	This product is for research use only. It is not intended for diagnostic or therapeutic use.

# Anti-HIF-1 alpha Antibody (A295407)

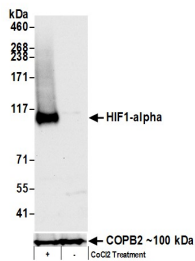
## Images:



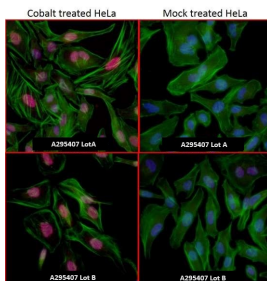
Samples: Whole cell lysate (1 mg for IP, 20% of IP loaded) from HepG2 cells that were either treated with 200  $\mu$ M cobalt chloride or left untreated. Antibodies: Anti-HIF-1 alpha Antibody (A295407) was used for WB at 0.04  $\mu$ g/ml and for IP at 6  $\mu$ g/mg lysate. Detection: Chemiluminescence with an exposure time of 3 seconds.



Samples: Whole cell lysate (50  $\mu$ g) from NIH3T3 cells that were either treated with 200  $\mu$ M cobalt chloride (+) or mock treated (-). Antibodies: Anti-HIF-1 alpha Antibody (A295407) used for WB at 0.04  $\mu$ g/ml. Detection: Chemiluminescence with exposure times of 3 seconds. Lower Panel: Rabbit anti-COPB2 antibody.



Samples: Whole cell lysate (50  $\mu$ g) from HepG2 cells that were either treated with 200  $\mu$ M cobalt chloride (+) or mock treated (-). Antibodies: Anti-HIF-1 alpha Antibody (A295407) was used for WB at 0.04  $\mu$ g/ml. Detection: Chemiluminescence with exposure times of 10 seconds. Lower Panel: Rabbit anti-COPB2 antibody.



Sample: Formaldehyde-fixed asynchronous HeLa cells treated with 200  $\mu$ M cobalt chloride (left) or mock treatment (right). Antibody: Anti-HIF-1 alpha Antibody (A295407) Lot A (upper images) and Lot B (lower images) used at a dilution of 1:100 (2  $\mu$ g/ml). Detection: Red-fluorescent goat anti-rabbit IgG-heavy and light chain cross-adsorbed Antibody DyLight® 594 Conjugated. Counterstain: DAPI (blue) and fluorescent phalloidin (green).