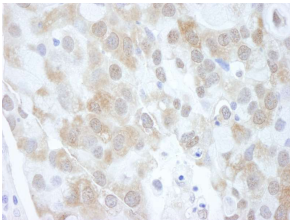


Anti-eIF4EBP1 Antibody (A295580)

Specifications:

Name:	Anti-eIF4EBP1 Antibody
Description:	Rabbit polyclonal antibody to eIF4EBP1.
Applications:	WB, IHC
Recommended Dilutions:	IHC: 1:5,000-1:20,000, WB: 1:1,000-1:6,000
Reactivity:	Human
Immunogen:	Synthetic peptide within amino acids 75 and the C-terminus of human eIF4EBP1 (NP_004086. 1).
Host:	Rabbit
Clonality:	Polyclonal
Isotype:	IgG
Conjugate:	Unconjugated
Purification:	Antigen affinity purification.
Concentration:	1 mg/ml
Product Form:	Liquid
Formulation:	Supplied in Tris-Citrate/Phosphate Buffer, pH 7-8, with 0.09% Sodium Azide.
Storage:	Shipped at 4°C. Upon delivery aliquot and store at -20°C. Avoid freeze / thaw cycles.
General Notes:	This antibody was affinity purified using the immunising peptide immobilized on solid support. Immunoglobulin concentration was determined by extinction coefficient: absorbance at 280 nm of 1.4 equals 1.0 mg of IgG.
Disclaimer:	This product is for research use only. It is not intended for diagnostic or therapeutic use.

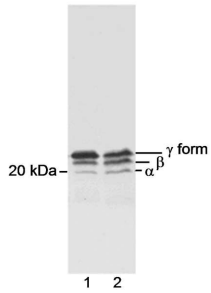
Images:



Sample: FFPE section of human breast carcinoma. Antibody: Anti-eIF4EBP1 Antibody (A295580) was used at a dilution of 1:20,000 (0.05µg/ml). Detection: DAB.

Anti-eIF4EBP1 Antibody (A295580)

Images continued:



Samples: Whole cell lysate (100 µg) from RINm5F insulinoma exposed to high or low concentration of leucine. Antibody: Anti-eIF4EBP1 Antibody (A295580) was used at 0.25 µg/ml. Detection: Chemiluminescence.