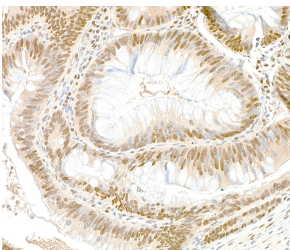


Anti-GAPDH Antibody (A295699)

Specifications:

Name:	Anti-GAPDH Antibody
Description:	Rabbit polyclonal antibody to GAPDH.
Applications:	WB, IHC
Recommended Dilutions:	IHC: 1:500-1:2,000, WB: 1:2,000-1:10,000
Reactivity:	Human, Mouse
Immunogen:	Synthetic peptide within amino acids 150-200 of human GAPDH (NP_002037. 2).
Host:	Rabbit
Clonality:	Polyclonal
Isotype:	IgG
Conjugate:	Unconjugated
Purification:	Antigen affinity purification.
Concentration:	200 µg/ml
Product Form:	Liquid
Formulation:	Supplied in Tris-Buffered Saline with 0.1% BSA and 0.09% Sodium Azide.
Storage:	Shipped at 4°C. Upon delivery aliquot and store at -20°C. Avoid freeze / thaw cycles.
General Notes:	This antibody was affinity purified using the immunising peptide immobilized on solid support. Immunoglobulin concentration was determined by extinction coefficient: absorbance at 280 nm of 1.4 equals 1.0 mg of IgG.
Disclaimer:	This product is for research use only. It is not intended for diagnostic or therapeutic use.

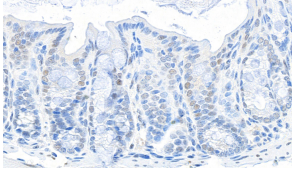
Images:



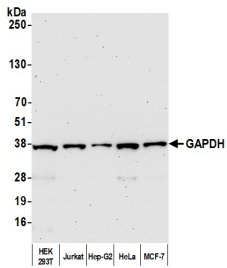
Sample: FFPE section of human colon carcinoma. Antibody: Anti-GAPDH Antibody (A295699) was used at a dilution of 1:1,000 (0.2 µg/ml). Detection: DAB.

Anti-GAPDH Antibody (A295699)

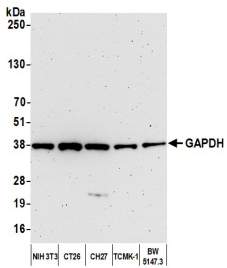
Images continued:



Sample: FFPE section of mouse intestine. Antibody: Anti-GAPDH Antibody (A295699) was used at a dilution of 1:1,000 (0.2 µg/ml). Detection: DAB.



Samples: Whole cell lysate (10 µg) from HEK293T, Jurkat, Hep-G2, HeLa, and MCF-7 cells prepared using NETN lysis buffer. Antibody: Anti-GAPDH Antibody (A295699) was used for WB at 0.04 µg/ml. Detection: Chemiluminescence with an exposure time of 75 seconds.



Samples: Whole cell lysate (10 µg) from NIH 3T3, CT26, CH27, TCMK-1, and BW5147.3 cells prepared using NETN lysis buffer. Antibody: Anti-GAPDH Antibody (A295699) was used for WB at 0.04 µg/ml. Detection: Chemiluminescence with an exposure time of 3 minutes.