

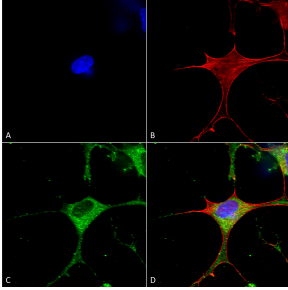
## Anti-CLC3 Antibody [S258-5] (A304752)

### Specifications:

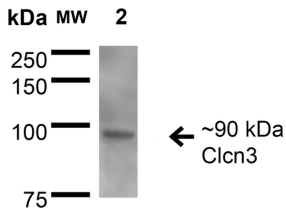
Name:	Anti-CLC3 Antibody [S258-5]
Description:	Mouse monoclonal [S258-5] antibody to CLC3.
Applications:	WB, IHC, ICC/IF
Recommended Dilutions:	WB: 1:1,000, IHC: 1:1,000, ICC/IF: 1:100
Reactivity:	Human, Mouse, Rat
Cross Reactivity:	This antibody does not cross-react with CLCN4 or CLCN5 - based on KO validation data.
Immunogen:	Synthetic peptide amino acids 98-115 (cytoplasmic N-terminus) of rat Clcn3.
Host:	Mouse
Clonality:	Monoclonal
Clone ID:	S258-5
Isotype:	IgG1
Conjugate:	Unconjugated
Purification:	Protein G purification.
Concentration:	1 mg/ml
Molecular Weight:	~90 kDa
Product Form:	Liquid
Formulation:	Supplied in Phosphate Buffered Saline, pH 7.4, with 50% Glycerol and 0.09% Sodium Azide.
Storage:	Shipped at 4°C. Upon delivery aliquot and store at -20°C. Avoid freeze / thaw cycles.
Disclaimer:	This product is for research use only. It is not intended for diagnostic or therapeutic use.

## Anti-CLC3 Antibody [S258-5] (A304752)

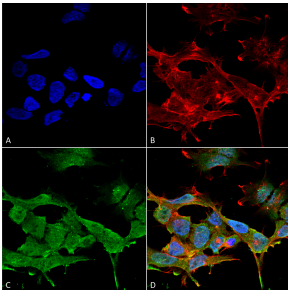
### Images:



Immunocytochemistry/Immunofluorescence analysis of human neuroblastoma cells (SH-SY5Y), fixed in 4% PFA for 15 min, using Anti-CLC3 Antibody [S258-5] (A304752), at 1:50 for overnight at 4°C with slow rocking. The secondary antibody used was AlexaFluor 488 at 1:1,000 for 1 hour at room temperature. Counterstain: Phalloidin-iFluor 647 (red) F-Actin stain; Hoechst (blue) nuclear stain at 1:800, 1.6mM for 20 minutes at room temperature. (A) Hoechst (blue) nuclear stain. (B) Phalloidin-iFluor 647 (red) F-Actin stain. (C) Clcn3 Antibody (D) Composite.



Western blot analysis of rat brain membrane showing detection of ~90 kDa Clcn3 protein using Anti-CLC3 Antibody [S258-5] (A304752) at 1:200 for 16 hours at 4°C. Lane 1: Molecular Weight Ladder. Lane 2: rat brain Membrane. Load: 15 µg. Block: 2% BSA and 2% Skim Milk in 1X TBST. The secondary antibody used was Goat Anti-Mouse IgG: HRP at 1:1,000 for 1 hour room temperature. Color Development: ECL solution for 6 min in room temperature. Predicted/Observed Size: ~90 kDa.



Immunocytochemistry/Immunofluorescence analysis of human neuroblastoma cell line (SK-N-BE, fixed in 4% formaldehyde for 15 min at room temperature, using Anti-CLC3 Antibody [S258-5] (A304752), at 1:100 for 60 minutes at room temperature. The secondary antibody used was Goat Anti-Mouse ATTO 488 at 1:100 for 60 minutes at room temperature. Counterstain: Phalloidin Texas Red F-Actin stain; DAPI (blue) nuclear stain at 1:1000, 1:5,000 for 60min room temperature, 5min room temperature. Localization: Membrane, Endosome, Endosome membrane, Cytoplasmic Vesicle, Secretory Vesicle Membrane. Magnification: 60X. (A) DAPI (blue) nuclear stain. (B) Phalloidin Texas Red F-Actin stain. (C) Clcn3 Antibody. (D) Composite.