

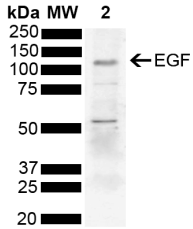
Anti-EGF Antibody (A304868)

Specifications:

Name:	Anti-EGF Antibody
Description:	Rabbit polyclonal antibody to EGF.
Specificity:	80 kDa and 55 kDa bands are degradation products.
Applications:	WB
Recommended Dilutions:	WB: 1:1,000
Reactivity:	Human
Immunogen:	Synthetic peptide from the mid-protein of Human Epidermal growth factor (aa. 670-770).
Host:	Rabbit
Clonality:	Polyclonal
Isotype:	IgG
Conjugate:	Unconjugated
Purification:	Peptide affinity purification.
Concentration:	1 mg/ml
Molecular Weight:	134 kDa
Product Form:	Liquid
Formulation:	Supplied in Phosphate Buffered Saline, pH 7.4, with 50% Glycerol and 0.09% Sodium Azide.
Storage:	Shipped at 4°C. Upon delivery aliquot and store at -20°C. Avoid freeze / thaw cycles.
Disclaimer:	This product is for research use only. It is not intended for diagnostic or therapeutic use.

Anti-EGF Antibody (A304868)

Images:



Western blot analysis of human HeLa showing detection of 134 kDa EGF protein using Anti-EGF Antibody (A304868) at 1:1,000 for 2 hours at room temperature with shaking. Load: 10 μ g. Block: 5% Skim Milk powder in TBST. The secondary antibody used was Goat Anti-Rabbit IgG: HRP at 1:5,000 for 1 hour at room temperature. Color Development: ECL solution for 5 minutes at room temperature. Predicted/Observed Size: 134 kDa. Other Band(s): 80 kDa, 55 kDa.