

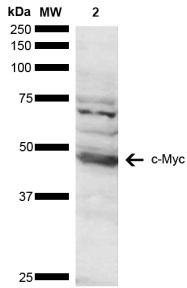
Anti-c-Myc Antibody (A304886)

Specifications:

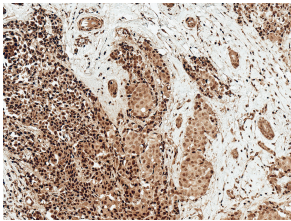
Name:	Anti-c-Myc Antibody
Description:	Rabbit polyclonal antibody to c-Myc.
Specificity:	This antibody detects additional bands due to post translational modifications.
Applications:	WB, IHC
Recommended Dilutions:	WB: 1:1,000, IHC: 1:50
Reactivity:	Human
Immunogen:	Synthetic peptide of Human c-Myc (220-320 aa), conjugated to Keyhole Limpet Haemocyanin (KLH)
Host:	Rabbit
Clonality:	Polyclonal
Isotype:	IgG
Conjugate:	Unconjugated
Purification:	Peptide affinity purification.
Concentration:	1 mg/ml
Molecular Weight:	48 kDa
Product Form:	Liquid
Formulation:	Supplied in Phosphate Buffered Saline, pH 7.4, with 50% Glycerol and 0.09% Sodium Azide.
Storage:	Shipped at 4°C. Upon delivery aliquot and store at -20°C. Avoid freeze / thaw cycles.
Disclaimer:	This product is for research use only. It is not intended for diagnostic or therapeutic use.

Anti-c-Myc Antibody (A304886)

Images:



Western blot analysis of human Cervical cancer cell line (HeLa) lysate showing detection of ~48.8 kDa c-Myc protein using Anti-c-Myc Antibody (A304886) at 1:1,000 for 2 hours at room temperature. Lane 1: Molecular Weight Ladder (MW). Lane 2: Cervical Cancer cell line (HeLa) lysate. Load: 10 μ g. Block: 5% Skim Milk in 1X TBST. The secondary antibody used was Goat Anti-Rabbit HRP:IgG at 1:3000 for 1 hour at room temperature. Color Development: ECL solution for 5 minutes at room temperature. Predicted/Observed Size: ~48.8 kDa. Other Band(s): due to post translational modifications.



Immunohistochemistry analysis of human breast cancer, fixed in formalin and paraffin-embedded. The Primary Antibody used was Anti-c-Myc Antibody (A304886) at 1:50 for 30 minutes at room temperature. Counterstain: Hematoxylin. Magnification: 10X. HRP-DAB Detection.