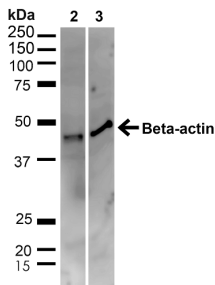


## Anti-beta Actin Antibody (A304904)

### Specifications:

Name:	Anti-beta Actin Antibody
Description:	Rabbit polyclonal antibody to beta Actin.
Specificity:	Predicted molecular weight at ~41.7 kDa. A double band may be observed.
Applications:	WB, ICC/IF
Recommended Dilutions:	WB: 1:1,000, ICC/IF: 1:100
Reactivity:	Human
Immunogen:	Synthetic peptide from the mid-protein range of human beta Actin.
Host:	Rabbit
Clonality:	Polyclonal
Isotype:	IgG
Conjugate:	Unconjugated
Purification:	Peptide affinity purification.
Concentration:	1 mg/ml
Product Form:	Liquid
Formulation:	Supplied in Phosphate Buffered Saline with 50% Glycerol and 0.09% Sodium Azide.
Storage:	Shipped at 4°C. Upon delivery aliquot and store at -20°C. Avoid freeze / thaw cycles.
Disclaimer:	This product is for research use only. It is not intended for diagnostic or therapeutic use.

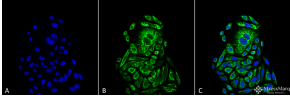
### Images:



Western blot analysis of human HeLa and HEK293T cell lysates showing detection of ~41.7kDa beta Actin protein using Anti-beta Actin Antibody (A304904) at 1:1,000 for 1 hour at room temperature. Lane 1: MW Ladder. Lane 2: human HeLa (20 µg). Lane 3: human HEK293T (20 µg). Load: 20 µg. Block: 5% milk + TBST for 1 hour at room temperature. The secondary antibody used was Goat Anti-Rabbit: HRP at 1:2000 for 1 hour at room temperature. Color Development: TMB solution for 12 min at room temperature. Predicted/Observed Size: ~41.7kDa.

## Anti-beta Actin Antibody (A304904)

Images continued:



Immunocytochemistry/Immunofluorescence analysis of human cervical cancer cell line (HeLa), fixed in 4% formaldehyde for 15 min at room temperature, using Anti-beta Actin Antibody (A304904), at 1:100 for 60 minutes at room temperature. The secondary antibody used was Goat Anti-Rabbit ATTO 488 at 1:100 for 60 minutes at room temperature. Counterstain: DAPI (blue) nuclear stain at 1:5,000 for 5 minutes room temperature. Localization: Cytoplasm, Cytoskeleton. Magnification: 40X. (A) DAPI (blue) nuclear stain (B) Phalloidin Texas Red F-Actin stain (C) Beta Actin Antibody (D) Composite.