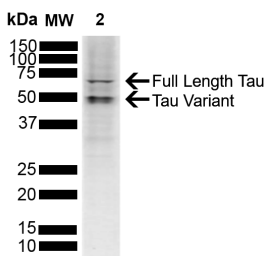


Anti-Tau Antibody (A304913)

Specifications:

Name:	Anti-Tau Antibody
Description:	Rabbit polyclonal antibody to Tau.
Applications:	WB, ELISA, IHC
Recommended Dilutions:	WB: 1:1,000
Reactivity:	Human, Mouse
Immunogen:	Recombinant Human Tau 2NR4 P301S Fibril.
Host:	Rabbit
Clonality:	Polyclonal
Isotype:	IgG
Conjugate:	Unconjugated
Purification:	Protein A purification.
Concentration:	1 mg/ml
Molecular Weight:	~45.8 kDa
Product Form:	Liquid
Formulation:	Supplied in Phosphate Buffered Saline, pH 7.4, with 50% Glycerol and 0.09% Sodium Azide.
Storage:	Shipped at 4°C. Upon delivery aliquot and store at -20°C. Avoid freeze / thaw cycles.
Disclaimer:	This product is for research use only. It is not intended for diagnostic or therapeutic use.

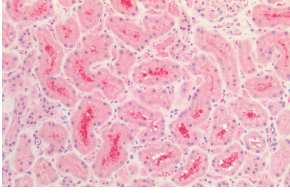
Images:



Western blot analysis of SH-SY5Y showing detection of ~45.8 kDa Tau protein using Anti-Tau Antibody (A304913) at 1:1,000 for 2 hours at room temperature with shaking. Lane 1: Molecular Weight Ladder (MW). Lane 2: SH-SY5Y. Load: 10 µg. Block: 5% Skim Milk powder in TBST. The secondary antibody used was Goat anti-rabbit IgG:HRP at 1:4,000 for 1 hour at room temperature with shaking. Color Development: Chemiluminescent for HRP (Moss) for 5 minutes in room temperature. Predicted/Observed Size: ~45.8 kDa. Other Band(s): 50 kDa, 65 kDa.

Anti-Tau Antibody (A304913)

Images continued:



Immunohistochemistry analysis of human kidney, fixed in formalin and paraffin-embedded. The Primary Antibody used was Anti-Tau Antibody (A304913).