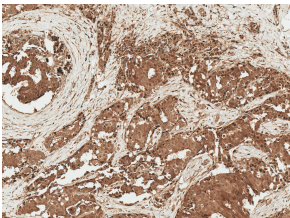


## Anti-AKT1 Antibody (A304932)

### Specifications:

Name:	Anti-AKT1 Antibody
Description:	Rabbit polyclonal antibody to AKT1.
Specificity:	Band is detected at ~65 kDa due to post translational modifications.
Applications:	WB, IHC
Recommended Dilutions:	WB: 1:1,000, IHC: 1:50
Reactivity:	Human, Mouse
Immunogen:	Synthetic peptide from the mid-protein of Human AKT1 (aa. 100-200).
Host:	Rabbit
Clonality:	Polyclonal
Isotype:	IgG
Conjugate:	Unconjugated
Purification:	Peptide affinity purification.
Concentration:	1 mg/ml
Molecular Weight:	65 kDa
Product Form:	Liquid
Formulation:	Supplied in Phosphate Buffered Saline, pH 7.4, with 50% Glycerol and 0.09% Sodium Azide.
Storage:	Shipped at 4°C. Upon delivery aliquot and store at -20°C. Avoid freeze / thaw cycles.
Disclaimer:	This product is for research use only. It is not intended for diagnostic or therapeutic use.

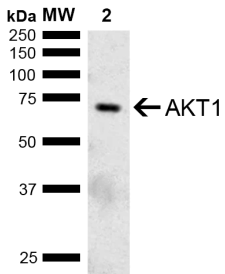
### Images:



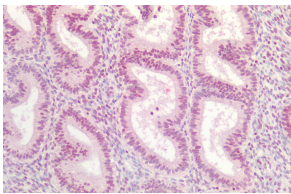
Immunohistochemistry analysis of human breast cancer, fixed in formalin and paraffin-embedded. The Primary Antibody used was Anti-AKT1 Antibody (A304932) at 1:50 for 30 minutes at room temperature. Counterstain: Hematoxylin. Magnification: 10X. HRP-DAB Detection.

## Anti-AKT1 Antibody (A304932)

Images continued:



Western blot analysis of mouse brain showing detection of ~55.7 kDa AKT1 protein using Anti-AKT1 Antibody (A304932) at 1:1,000 for 2 hours at room temperature. Lane 1: Molecular Weight Ladder (MW). Lane 2: mouse Brain. Load: 15  $\mu$ g. Block: 5% Skim Milk in 1X TBST. The secondary antibody used was Goat Anti-Rabbit IgG: HRP at 1:5,000 for 1 hour at room temperature. Color Development: ECL solution for 5 minutes at room temperature. Predicted/Observed Size: ~55.7 kDa. Other Band(s): Band is detected at ~65 kDa, due to post translational modifications.



Immunohistochemistry analysis of human uterus, fixed in formalin and paraffin-embedded. The Primary Antibody used was Anti-AKT1 Antibody (A304932).