

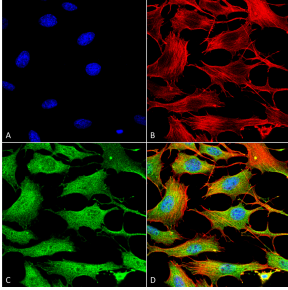
Anti-ATP7B Antibody [S62-29] (A304969)

Specifications:

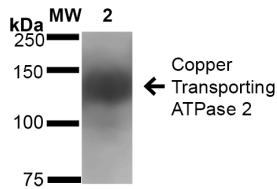
Name:	Anti-ATP7B Antibody [S62-29]
Description:	Mouse monoclonal [S62-29] antibody to ATP7B.
Specificity:	Band detected in rat brain membrane preparations.
Applications:	WB, IHC, ICC/IF, IP
Recommended Dilutions:	WB: 1:1,000, ICC/IF: 1:100
Reactivity:	Human, Mouse, Rat
Immunogen:	Synthetic peptide amino acids 3-21 (cytoplasmic N-terminus) of human Copper-transporting ATPase2.
Host:	Mouse
Clonality:	Monoclonal
Clone ID:	S62-29
Isotype:	IgG1
Conjugate:	Unconjugated
Purification:	Protein G purification.
Concentration:	1 mg/ml
Molecular Weight:	~160 kDa
Product Form:	Liquid
Formulation:	Supplied in Phosphate Buffered Saline, pH 7.4, with 50% Glycerol and 0.09% Sodium Azide.
Storage:	Shipped at 4°C. Upon delivery aliquot and store at -20°C. Avoid freeze / thaw cycles.
Disclaimer:	This product is for research use only. It is not intended for diagnostic or therapeutic use.

Anti-ATP7B Antibody [S62-29] (A304969)

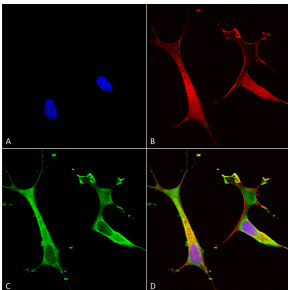
Images:



Immunocytochemistry/Immunofluorescence analysis of mouse NIH 3T3, fixed in 4% formaldehyde for 15 min at room temperature, using Anti-ATP7B Antibody [S62-29] (A304969), at 1:100 for 60 minutes at room temperature. The secondary antibody used was Goat Anti-Mouse ATTO 488 at 1:200 for 60 minutes at room temperature. Counterstain: Phalloidin Texas Red F-Actin stain; DAPI (blue) nuclear stain at 1:1000, 1:5,000 for 60 minutes at room temperature, 5 minutes at room temperature. Localization: Cytoplasm. Magnification: 60X. (A) DAPI (blue) nuclear stain. (B) Phalloidin Texas Red F-Actin stain. (C) Copper Transporting ATPase 2 Antibody. (D) Composite.



Western blot analysis of rat brain membrane showing detection of ~160 kDa Copper Transporting ATPase 2 protein using Anti-ATP7B Antibody [S62-29] (A304969) at 1:1,000 for 16 hours at 4°C. Lane 1: Molecular Weight Ladder (MW). Lane 2: rat brain membrane cell lysate. Load: 20 µg. Block: 2% BSA and 2% Skim Milk in 1X TBST. The secondary antibody used was Goat Anti-Mouse IgG: HRP at 1:100 for 60 minutes at room temperature. Color Development: ECL solution for 6 min in room temperature. Predicted/Observed Size: ~160 kDa.



Immunocytochemistry/Immunofluorescence analysis of human neuroblastoma cells (SH-SY5Y), fixed in 4% PFA for 15 min, using Anti-ATP7B Antibody [S62-29] (A304969), at 1:100 for overnight at 4°C with slow rocking. The secondary antibody used was AlexaFluor 488 at 1:1,000 for 1 hour at room temperature. Counterstain: Phalloidin-iFluor 647 (red) F-Actin stain; Hoechst (blue) nuclear stain at 1:800, 1.6mM for 20 minutes at room temperature. (A) Hoechst (blue) nuclear stain. (B) Phalloidin-iFluor 647 (red) F-Actin stain. (C) Copper Transporting ATPase 2 Antibody (D) Composite.