

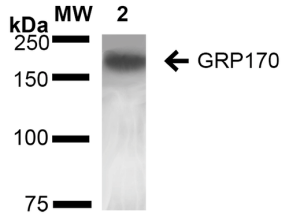
Anti-ORP150 Antibody [6E3-2C3] (A304973)

Specifications:

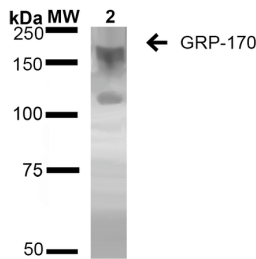
Name:	Anti-ORP150 Antibody [6E3-2C3]
Description:	Mouse monoclonal [6E3-2C3] antibody to ORP150.
Applications:	WB, ICC/IF
Recommended Dilutions:	WB: 1:1,000, ICC/IF: 1:100
Reactivity:	Human, Mouse, Rat
Immunogen:	Recombinant Full length Human GRP170 Protein.
Host:	Mouse
Clonality:	Monoclonal
Clone ID:	6E3-2C3
Isotype:	IgG2b
Conjugate:	Unconjugated
Purification:	Protein G purification.
Concentration:	1 mg/ml
Molecular Weight:	~170 kDa
Product Form:	Liquid
Formulation:	Supplied in Phosphate Buffered Saline, pH 7.4, with 50% Glycerol and 0.1% Sodium Azide
Storage:	Shipped at 4°C. Upon delivery aliquot and store at -20°C. Avoid freeze / thaw cycles.
Disclaimer:	This product is for research use only. It is not intended for diagnostic or therapeutic use.

Anti-ORP150 Antibody [6E3-2C3] (A304973)

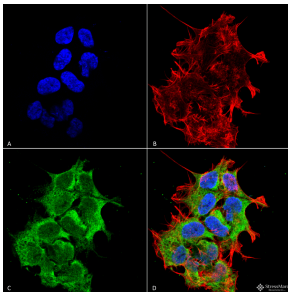
Images:



Western blot analysis of rat liver showing detection of ~170 kDa GRP170 protein using Anti-ORP150 Antibody [6E3-2C3] (A304973) at 1:1,000 for 16 hours at 4°C. Lane 1: Molecular Weight Ladder (MW). Lane 2: rat liver cell lysate. Load: 20 µg. Block: 2% BSA and 2% Skim Milk in 1X TBST. The secondary antibody used was Goat Anti-Mouse IgG: HRP at 1:100 for 60 minutes at room temperature. Color Development: ECL solution for 6 min in room temperature. Predicted/Observed Size: ~170 kDa.



Western blot analysis of human Embryonic kidney epithelial cell line (HEK293) lysates showing detection of ~170 kDa GRP170 protein using Anti-ORP150 Antibody [6E3-2C3] (A304973) at 1:1,000 for 16 hours at 4°C. Lane 1: Molecular Weight Ladder (MW). Lane 2: HEK-293 cell lysate. Load: 20 µg. Block: 2% BSA and 2% Skim Milk in 1X TBST. The secondary antibody used was Goat Anti-Mouse IgG: HRP at 1:100 for 60 minutes at room temperature. Color Development: ECL solution for 6 min in room temperature. Predicted/Observed Size: ~170 kDa. Other Band(s): 100 kDa.



Immunocytochemistry/Immunofluorescence analysis of human neuroblastoma cell line (SK-N-BE, fixed in 4% formaldehyde for 15 min at room temperature, using Anti-ORP150 Antibody [6E3-2C3] (A304973), at 1:100 for 60 minutes at room temperature. The secondary antibody used was Goat Anti-Mouse ATTO 488 at 1:100 for 60 minutes at room temperature. Counterstain: Phalloidin Texas Red F-Actin stain; DAPI (blue) nuclear stain at 1:1000; 1:5,000 for 60 minutes room temperature, 5 minutes room temperature. Localization: Endoplasmic Reticulum, Endoplasmic Reticulum Lumen. Magnification: 60X.(A) DAPI (blue) nuclear stain. (B) Phalloidin Texas Red F-Actin stain. (C) GRP170 Antibody. (D) Composite.