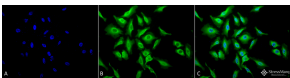


## Anti-HSP70 Antibody (A305017)

### Specifications:

Name:	Anti-HSP70 Antibody
Description:	Chicken polyclonal antibody to HSP70.
Applications:	WB, ICC/IF, ELISA
Recommended Dilutions:	WB: 1:1,000, ICC/IF: 1:120
Reactivity:	Human, Mouse, Rat
Immunogen:	Full length Human HSP70.
Host:	Chicken
Clonality:	Polyclonal
Isotype:	IgY
Conjugate:	Unconjugated
Purification:	PEG purification.
Concentration:	1 mg/ml
Molecular Weight:	~70 kDa
Product Form:	Liquid
Formulation:	Supplied in Phosphate Buffered Saline, pH 7.4, with 50% Glycerol and 0.09% Sodium Azide.
Storage:	Shipped at 4°C. Upon delivery aliquot and store at -20°C. Avoid freeze / thaw cycles.
Disclaimer:	This product is for research use only. It is not intended for diagnostic or therapeutic use.

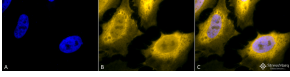
### Images:



Immunocytochemistry/Immunofluorescence analysis of human heat shocked cervical cancer cell line (HeLa), fixed in 2% formaldehyde for 20 minutes at room temperature, using Anti-HSP70 Antibody (A305017), at 1:120 for 12 hours at 4°C. The secondary antibody used was FITC Goat Anti-Chicken (green) at 1:200 for 2 hours at room temperature. Counterstain: DAPI (blue) nuclear stain at 1:40000 for 2 hours at room temperature. Localization: Cytoplasm. Perinuclear region of cytoplasm. Magnification: 20x. (A) DAPI (blue) nuclear stain. (B) Anti-Hsp70 Antibody. (C) Composite. Heat Shocked at 42°C for 1h.

## Anti-HSP70 Antibody (A305017)

Images continued:



Immunocytochemistry/Immunofluorescence analysis of human heat shocked cervical cancer cell line (HeLa), fixed in 2% formaldehyde for 20 minutes at room temperature, using Anti-HSP70 Antibody (A305017), at 1:120 for 12 hours at 4°C. The secondary antibody used was R-PE Goat Anti-Chicken (yellow) at 1:200 for 2 hours at room temperature. Counterstain: DAPI (blue) nuclear stain at 1:40000 for 2 hours at room temperature. Localization: Cytoplasm. Perinuclear region of cytoplasm. Magnification: 100x. (A) DAPI (blue) nuclear stain. (B) Anti-Hsp70 Antibody. (C) Composite. Heat Shocked at 42°C for 1h.



Western blot analysis of human Cervical cancer cell line (HeLa) lysate showing detection of HSP70 protein using Anti-HSP70 Antibody (A305017) at 1:1,000 for 2 hours at room temperature. Load: 15 µg protein. Block: 1.5% BSA for 30 minutes at room temperature. The secondary antibody used was Goat anti-Chicken IgY: HRP for 1 hour at room temperature.