

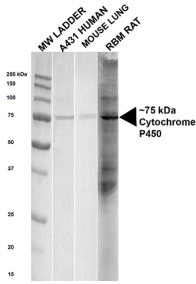
Anti-Cytochrome P450 Reductase Antibody (A305022)

Specifications:

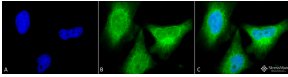
Name:	Anti-Cytochrome P450 Reductase Antibody
Description:	Rabbit polyclonal antibody to Cytochrome P450 Reductase.
Applications:	WB, IHC, ICC/IF
Recommended Dilutions:	WB: 1:1,000, ICC/IF: 1:60
Reactivity:	Human, Mouse, Rat
Immunogen:	Rat native full-length Cytochrome P450 Reductase purified from liver tissue.
Host:	Rabbit
Clonality:	Polyclonal
Isotype:	IgG
Conjugate:	Unconjugated
Purification:	Protein A purification.
Concentration:	1 mg/ml
Molecular Weight:	~77 kDa
Product Form:	Liquid
Formulation:	Supplied in Phosphate Buffered Saline, pH 7.4, with 50% Glycerol and 0.09% Sodium Azide.
Storage:	Shipped at 4°C. Upon delivery aliquot and store at -20°C. Avoid freeze / thaw cycles.
Disclaimer:	This product is for research use only. It is not intended for diagnostic or therapeutic use.

Anti-Cytochrome P450 Reductase Antibody (A305022)

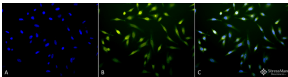
Images:



Western blot analysis of Human, mouse, rat Human, mouse and rat Lysates showing detection of ~ 75 kDa Cytochrome P450 Reductase protein using Anti-Cytochrome P450 Reductase Antibody (A305022) at 1:1,000 for 1 hour at room temperature. Lane 1: MW ladder. Lane 2: human lysate, A431. Lane 3: mouse lung lysate. Lane 4: rat lysate, rat brain membrane (RBM). Load: 20 µg. Block: 5% milk + TBST for 1 hour at room temperature. The secondary antibody used was Goat Anti-Rabbit HRP antibody at 1:2000 for 1 hour at room temperature. Color Development: TMB solution for 11 min at room temperature. Predicted/Observed Size: ~ 75 kDa. Other Band(s): ~30 -250 in rat lysate only.



Immunocytochemistry/Immunofluorescence analysis of human cervical cancer cell line (HeLa), fixed in 2% formaldehyde for 20 minutes at room temperature, using Anti-Cytochrome P450 Reductase Antibody (A305022), at 1:150 for 12 hours at 4°C. The secondary antibody used was R-PE Goat Anti-Rabbit (yellow) at 1:200 for 2 hours at room temperature. Counterstain: DAPI (blue) nuclear stain at 1:40000 for 2 hours at room temperature. Localization: Endoplasmic reticulum membrane. Cytosol. Magnification: 100x.(A) DAPI (blue) nuclear stain. (B) Anti-Cytochrome P450 Reductase Antibody. (C) Composite.



Immunocytochemistry/Immunofluorescence analysis of human heat shocked cervical cancer cell line (HeLa), fixed in 2% formaldehyde for 20 minutes at room temperature, using Anti-Cytochrome P450 Reductase Antibody (A305022), at 1:60 for 12 hours at 4°C. The secondary antibody used was FITC Goat Anti-Rabbit (green) at 1:200 for 2 hours at room temperature. Counterstain: DAPI (blue) nuclear stain at 1:40000 for 2 hours at room temperature. Localization: Endoplasmic reticulum membrane. Cytosol. Magnification: 20x.(A) DAPI (blue) nuclear stain. (B) Anti-Cytochrome P450 Reductase Antibody. (C) Composite. Heat Shocked at 42°C for 1h.