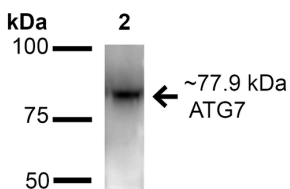


Anti-ATG7 Antibody (A305057)

Specifications:

Name:	Anti-ATG7 Antibody
Description:	Rabbit polyclonal antibody to ATG7.
Applications:	WB, IHC
Recommended Dilutions:	WB: 1:1,000, IHC: 1:50
Reactivity:	Human, Mouse, Rat
Immunogen:	Synthetic peptide from the C-terminal of Human ATG7.
Host:	Rabbit
Clonality:	Polyclonal
Isotype:	IgG
Conjugate:	Unconjugated
Purification:	Peptide affinity purification.
Concentration:	1 mg/ml
Molecular Weight:	77.9 kDa
Product Form:	Liquid
Formulation:	Supplied in Phosphate Buffered Saline with 50% Glycerol and 0.09% Sodium Azide.
Storage:	Shipped at 4°C. Upon delivery aliquot and store at -20°C. Avoid freeze / thaw cycles.
Disclaimer:	This product is for research use only. It is not intended for diagnostic or therapeutic use.

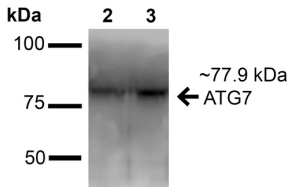
Images:



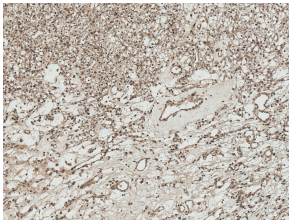
Western blot analysis of mouse and rat brain cell lysates showing detection of ~77.9 kDa ATG7 protein using Anti-ATG7 Antibody (A305057) at 1:1,000 for 16 hours at 4°C. Lane 1: Molecular Weight Ladder. Lane 2: mouse brain cell lysates. Lane 3: rat brain cell lysates. Load: 20 µg. Block: 2% BSA and 2% Skim Milk in 1X TBST. The secondary antibody used was Goat Anti-Rabbit IgG: HRP at 1:2000 for 60 minutes at room temperature. Color Development: ECL solution for 6 min at room temperature. Predicted/Observed Size: ~77.9 kDa.

Anti-ATG7 Antibody (A305057)

Images continued:



Western blot analysis of human Embryonic kidney epithelial cell line (HEK293T) lysate showing detection of ~77.9 kDa ATG7 protein using Anti-ATG7 Antibody (A305057) at 1:1,000 for 16 hours at 4°C. Lane 1: Molecular Weight Ladder (MW). Lane 2: human Embryonic kidney epithelial cell line (HEK293T) lysate. Load: 20 µg. Block: 2% BSA and 2% Skim Milk in 1X TBST. The secondary antibody used was Goat Anti-Rabbit IgG: HRP at 1:2000 for 60 minutes at room temperature. Color Development: ECL solution for 6 min at room temperature. Predicted/Observed Size: ~77.9 kDa.



Immunohistochemistry analysis of human kidney, fixed in formalin and paraffin-embedded. The Primary Antibody used was Anti-ATG7 Antibody (A305057) at 1:50 for 30 minutes at room temperature. Counterstain: Hematoxylin. Magnification: 10X.