

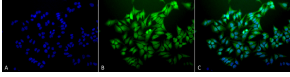
## Anti-Ubiquitin Antibody [6C11-B3] (A305079)

### Specifications:

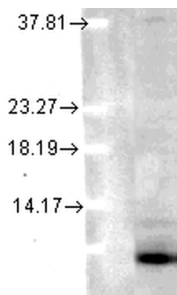
|                        |  |
|------------------------|--|
| Name:                  | Anti-Ubiquitin Antibody [6C11-B3]  |
| Description:           | Mouse monoclonal [6C11-B3] antibody to Ubiquitin.  |
| Applications:          | WB, ICC/IF, ELISA  |
| Recommended Dilutions: | WB: 1:1,000, ICC/IF: 1:100   |
| Reactivity:            | Human, Mouse, Rat, Bovine  |
| Immunogen:             | Native bovine ubiquitin, conjugated to KLH.  |
| Host:                  | Mouse  |
| Clonality:             | Monoclonal   |
| Clone ID:              | 6C11-B3  |
| Isotype:               | IgG2a  |
| Light Chains:          | kappa  |
| Conjugate:             | Unconjugated   |
| Purification:          | Protein G purification.  |
| Concentration:         | 1 mg/ml  |
| Molecular Weight:      | ~10 kDa  |
| Product Form:          | Liquid   |
| Formulation:           | Supplied in Phosphate Buffered Saline, pH 7.4, with 50% Glycerol and 0.09% Sodium Azide.     |
| Storage:               | Shipped at 4°C. Upon delivery aliquot and store at -20°C. Avoid freeze / thaw cycles.        |
| Disclaimer:            | This product is for research use only. It is not intended for diagnostic or therapeutic use. |

## Anti-Ubiquitin Antibody [6C11-B3] (A305079)

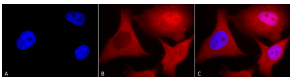
### Images:



Immunocytochemistry/Immunofluorescence analysis of human cervical cancer cell line (HeLa), fixed in 2% formaldehyde for 20 minutes at room temperature, using Anti-Ubiquitin Antibody [6C11-B3] (A305079), at 1:100 for 12 hours at 4°C. The secondary antibody used was FITC Goat Anti-Mouse (green) at 1:200 for 2 hours at room temperature. Counterstain: DAPI (blue) nuclear stain at 1:40000 for 2 hours at room temperature. Localization: Diffuse nuclear and cytoplasmic staining. Magnification: 20x. (A) DAPI (blue) nuclear stain. (B) Anti-Ubiquitin Antibody. (C) Composite.



Western blot analysis of human Cell lysates showing detection of Ubiquitin protein using Anti-Ubiquitin Antibody [6C11-B3] (A305079) at 1:1,000 for 2 hours at room temperature. Load: 15 µg. Block: 1.5% BSA for 30 minutes at room temperature. The secondary antibody used was Sheep Anti-Mouse IgG: HRP for 1 hour at room temperature.



Immunocytochemistry/Immunofluorescence analysis of human cervical cancer cell line (HeLa), fixed in 2% formaldehyde for 20 minutes at room temperature, using Anti-Ubiquitin Antibody [6C11-B3] (A305079), at 1:100 for 12 hours at 4°C. The secondary antibody used was APC Goat Anti-Mouse (red) at 1:200 for 2 hours at room temperature. Counterstain: DAPI (blue) nuclear stain at 1:40000 for 2 hours at room temperature. Localization: Diffuse nuclear and cytoplasmic staining. Magnification: 100x. (A) DAPI (blue) nuclear stain. (B) Anti-Ubiquitin Antibody. (C) Composite.