

Anti-Calnexin Antibody (A305107)

Specifications:

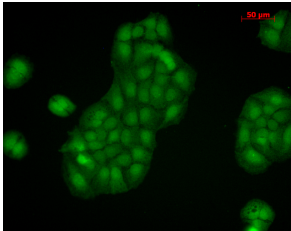
Name:	Anti-Calnexin Antibody
Description:	Rabbit polyclonal antibody to Calnexin.
Specificity:	This antibody detects the C-terminal domain of Calnexin. Weak detection in Chicken, Drosophila, and Xenopus tissues
Applications:	WB, IHC, ICC/IF, IP, Flow Cytometry
Recommended Dilutions:	WB: 1:2,000, ICC/IF: 1:100, IHC: 1:100
Reactivity:	Human, Mouse, Rat, Bovine, Monkey, Chicken, Canine, Guinea Pig, Hamster, Porcine, Quail, Rabbit, Sheep, Drosophila, Xenopus
Immunogen:	Dog Calnexin C-terminal synthetic peptide conjugated to KLH. Identical to human, mouse and rat calnexin sequences over these residues
Host:	Rabbit
Clonality:	Polyclonal
Isotype:	IgG
Conjugate:	Unconjugated
Purification:	Protein A purification.
Concentration:	1 mg/ml
Molecular Weight:	~90 kDa
Product Form:	Liquid
Formulation:	Supplied in Phosphate Buffered Saline, pH 7.2, with 50% Glycerol and 0.09% Sodium Azide.
Storage:	Shipped at 4°C. Upon delivery aliquot and store at -20°C. Avoid freeze / thaw cycles.
Disclaimer:	This product is for research use only. It is not intended for diagnostic or therapeutic use.

Anti-Calnexin Antibody (A305107)

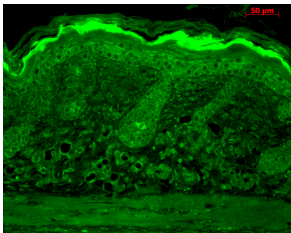
Images:



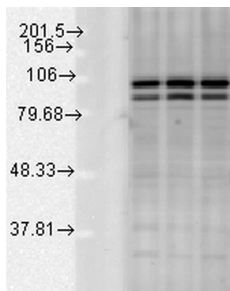
Immunocytochemistry/Immunofluorescence analysis of human heat shocked cervical cancer cell line (HeLa), fixed in 2% formaldehyde for 20 minutes at room temperature, using Anti-Calnexin Antibody (A305107), at 1:80 for 12 hours at 4°C. The secondary antibody used was R-PE Goat Anti-Rabbit (yellow) at 1:200 for 2 hours at room temperature. Counterstain: DAPI (blue) nuclear stain at 1:40000 for 2 hours at room temperature. Localization: Endoplasmic reticulum membrane. Melanosome. Magnification: 20x. (A) DAPI (blue) nuclear stain. (B) Anti-Calnexin-CT Antibody. (C) Composite. Heat Shocked at 42°C for 1h.



Immunocytochemistry/Immunofluorescence analysis of human HaCaT cells, fixed in cold 100% methanol at -20°C for 10 minutes, using Anti-Calnexin Antibody (A305107), at 1:100 for 12 hours at 4°C. The secondary antibody used was FITC Goat Anti-Rabbit at 1:50 for 1-2 hours at room temperature in dark. Localization: Nuclear staining, cytoplasmic staining.



Immunohistochemistry analysis of mouse backskin, fixed in Bouin's fixative solution. The Primary Antibody used was Anti-Calnexin Antibody (A305107) at 1:100 for 1 hour at room temperature. The secondary antibody used was FITC Goat Anti-Rabbit (green) at 1:50 for 1 hour at room temperature. Localization: Hair Follicles, Basal cells in epidermis, and second layer of epidermis.



Western blot analysis of rat tissue mix showing detection of Calnexin-CT protein using Anti-Calnexin Antibody (A305107) at 1:1,000 for 2 hours at room temperature. Load: 15 µgprotein. Block: 1.5% BSA for 30 minutes at room temperature. The secondary antibody used was Donkey Anti-Rabbit IgG: HRP for 1 hour at room temperature.