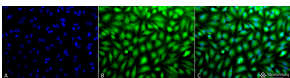


Anti-ERK1 Antibody (A305114)

Specifications:

Name:	Anti-ERK1 Antibody
Description:	Rabbit polyclonal antibody to ERK1.
Applications:	WB, IHC, ICC/IF, Flow Cytometry
Recommended Dilutions:	WB: 1:1,000, IHC: 1:100, ICC/IF: 1:100, FCM: 1:100
Reactivity:	Human, Mouse, Rat, Bovine, Sheep, Chicken, Drosophila, Xenopus
Immunogen:	A 35 residue synthetic peptide, corresponding to Rat Erk1 MAP kinase with the CGG spacer group added and the peptide coupled to KLH
Host:	Rabbit
Clonality:	Polyclonal
Isotype:	IgG
Conjugate:	Unconjugated
Purification:	Peptide affinity purification.
Concentration:	1 mg/ml
Molecular Weight:	~44 kDa (ERK1) / ~42 kDa (ERK2)
Product Form:	Liquid
Formulation:	Supplied in Phosphate Buffered Saline, pH 7.4, with 50% Glycerol and 0.09% Sodium Azide.
Storage:	Shipped at 4°C. Upon delivery aliquot and store at -20°C. Avoid freeze / thaw cycles.
Disclaimer:	This product is for research use only. It is not intended for diagnostic or therapeutic use.

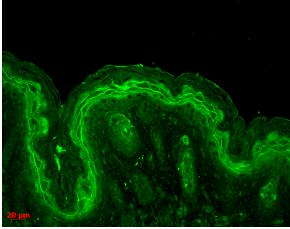
Images:



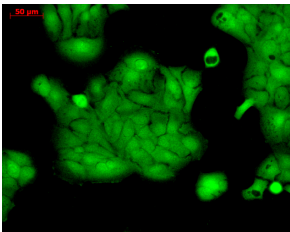
Immunocytochemistry/Immunofluorescence analysis of human cervical cancer cell line (HeLa), fixed in 2% formaldehyde for 20 minutes at room temperature, using Anti-ERK1 Antibody (A305114), at 1:100 for 12 hours at 4°C. The secondary antibody used was FITC Goat Anti-Rabbit (green) at 1:200 for 2 hours at room temperature. Counterstain: DAPI (blue) nuclear stain at 1:40000 for 2 hours at room temperature. Localization: Cytoplasm. Nucleus. Magnification: 20x.(A) DAPI (blue) nuclear stain. (B) Anti-Erk1/2 Antibody. (C) Composite.

Anti-ERK1 Antibody (A305114)

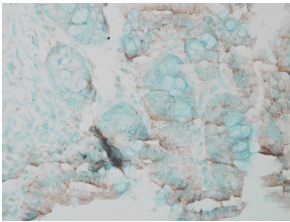
Images continued:



Immunohistochemistry analysis of mouse backskin, fixed in Bouin's fixative solution. The Primary Antibody used was Anti-ERK1 Antibody (A305114) at 1:100 for 1 hour at room temperature. The secondary antibody used was FITC Goat Anti-Rabbit (green) at 1:50 for 1 hour at room temperature. Localization: Cytoplasm.



Immunocytochemistry/Immunofluorescence analysis of human HaCaT cells, fixed in cold 100% methanol at -20°C for 10 minutes, using Anti-ERK1 Antibody (A305114), at 1:100 for 12 hours at 4°C. The secondary antibody used was FITC Goat Anti-Rabbit at 1:50 for 1-2 hours at room temperature in dark. Localization: Cytoplasm. Nucleus.



Immunohistochemistry analysis of mouse inflamed colon, fixed in formalin. The Primary Antibody used was Anti-ERK1 Antibody (A305114) at 1:25,000 for 12 hours at 4°C. The secondary antibody used was Biotin Goat Anti-Rabbit at 1:2000 for 1 hour at room temperature. Counterstain: Methyl Green at 200uL for 2 min at room temperature. This image was produced using an amplifying IHC wash buffer. The antibody has therefore been diluted more than is recommended for other applications..