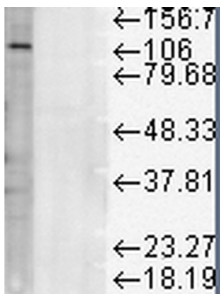


Anti-LAMP1 Antibody [Ly1C6] (A305123)

Specifications:

Name:	Anti-LAMP1 Antibody [Ly1C6]
Description:	Mouse monoclonal [Ly1C6] antibody to LAMP1.
Applications:	WB, ICC/IF, IP
Recommended Dilutions:	WB: 1:1,000, ICC/IF: 1:1,000
Reactivity:	Human, Mouse, Rat, Hamster
Immunogen:	Rat liver lysosomal membrane preparations.
Host:	Mouse
Clonality:	Monoclonal
Clone ID:	Ly1C6
Isotype:	IgG1
Conjugate:	Unconjugated
Purification:	Protein G purification.
Concentration:	1 mg/ml
Molecular Weight:	~120 kDa
Product Form:	Liquid
Formulation:	Supplied in Phosphate Buffered Saline, pH 7.4, with 50% Glycerol and 0.09% Sodium Azide.
Storage:	Shipped at 4°C. Upon delivery aliquot and store at -20°C. Avoid freeze / thaw cycles.
Disclaimer:	This product is for research use only. It is not intended for diagnostic or therapeutic use.

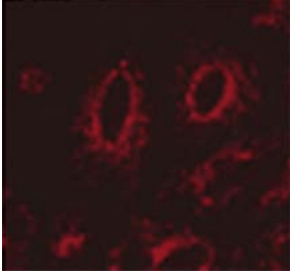
Images:



Western blot analysis of rat liver microsome lysate showing detection of LAMP1 protein using Anti-LAMP1 Antibody [Ly1C6] (A305123) at 1:1,000 for 2 hours at room temperature. Load: 15 µg. Block: 1.5% BSA for 30 minutes at room temperature. The secondary antibody used was Sheep Anti-Mouse IgG: HRP for 1 hour at room temperature.

Anti-LAMP1 Antibody [Ly1C6] (A305123)

Images continued:



Immunocytochemistry/Immunofluorescence analysis of human transfected HeLa cells, using Anti-LAMP1 Antibody [Ly1C6] (A305123), at 1:1,000. The secondary antibody used was APC Goat Anti-Mouse (red).