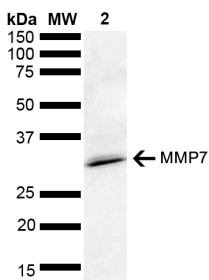


Anti-MMP7 Antibody (A305165)

Specifications:

Name:	Anti-MMP7 Antibody
Description:	Rabbit polyclonal antibody to MMP7.
Applications:	WB, IHC
Recommended Dilutions:	WB: 1:1,000, IHC: 1:50
Reactivity:	Human, Rat
Immunogen:	Synthetic peptide from the C-terminal of Human MMP7 (257-267 aa), conjugated to Keyhole Limpet Haemocyanin (KLH)
Host:	Rabbit
Clonality:	Polyclonal
Isotype:	IgG
Conjugate:	Unconjugated
Purification:	Peptide affinity purification.
Concentration:	1 mg/ml
Molecular Weight:	29.7 kDa
Product Form:	Liquid
Formulation:	Supplied in Phosphate Buffered Saline, pH 7.4, with 50% Glycerol and 0.09% Sodium Azide.
Storage:	Shipped at 4°C. Upon delivery aliquot and store at -20°C. Avoid freeze / thaw cycles.
Disclaimer:	This product is for research use only. It is not intended for diagnostic or therapeutic use.

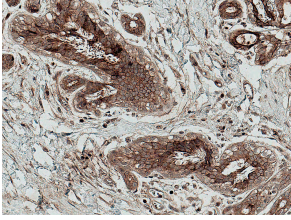
Images:



Western blot analysis of rat kidney lysate showing detection of ~28 kDa MMP7 protein using Anti-MMP7 Antibody (A305165) at 1:1,000 for 2 hours at room temperature. Lane 1: Molecular Weight Ladder (MW). Lane 2: rat kidney lysate. Load: 10 μ g. Block: 5% Skim Milk in 1X TBST. The secondary antibody used was Goat Anti-Rabbit HRP:IgG at 1:4,000 for 1 hour at room temperature. Color Development: ECL solution for 5 minutes at room temperature. Predicted/Observed Size: ~28 kDa.

Anti-MMP7 Antibody (A305165)

Images continued:



Immunohistochemistry analysis of human breast cancer, fixed in formalin and paraffin-embedded. The Primary Antibody used was Anti-MMP7 Antibody (A305165) at 1:50 for 30 minutes at room temperature. Magnification: 20X.