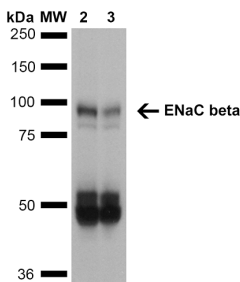


## Anti-SCNN1B Antibody [7B8] (A305180)

### Specifications:

Name:	Anti-SCNN1B Antibody [7B8]
Description:	Mouse monoclonal [7B8] antibody to SCNN1B.
Applications:	WB, IHC
Recommended Dilutions:	WB: 1:1,000, IHC: 1:150
Reactivity:	Mouse
Immunogen:	Synthetic peptide from the C-terminal of Rat ENaC beta (aa. 617-638).
Host:	Mouse
Clonality:	Monoclonal
Clone ID:	7B8
Isotype:	IgG1
Conjugate:	Unconjugated
Purification:	Protein G purification.
Concentration:	1 mg/ml
Molecular Weight:	~87 kDa
Product Form:	Liquid
Formulation:	Supplied in Phosphate Buffered Saline, pH 7.4, with 50% Glycerol and 0.09% Sodium Azide.
Storage:	Shipped at 4°C. Upon delivery aliquot and store at -20°C. Avoid freeze / thaw cycles.
Disclaimer:	This product is for research use only. It is not intended for diagnostic or therapeutic use.

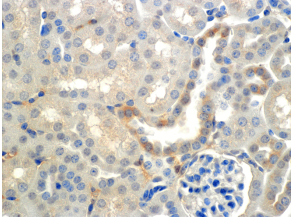
### Images:



Western blot analysis of mouse whole kidney homogenates showing detection of ~87kDa ENaC beta protein using Anti-SCNN1B Antibody [7B8] (A305180) at 1:1,000. Lane 1: Molecular Weight Ladder (MW). Lane 2: Low-salt diet. Lane 3: Normal-salt diet. Load: 20  $\mu$ g. Predicted/Observed Size: ~87kDa.

## Anti-SCNN1B Antibody [7B8] (A305180)

Images continued:



Immunohistochemistry analysis of mouse kidney. The Primary Antibody used was Anti-SCNN1B Antibody [7B8] (A305180) at 1:150. Localization: Collecting duct principal cells. Magnification: 60X.