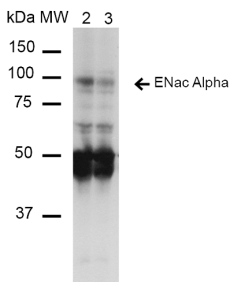


Anti-SCNN1A Antibody [14E10] (A305187)

Specifications:

Name:	Anti-SCNN1A Antibody [14E10]
Description:	Mouse monoclonal [14E10] antibody to SCNN1A.
Applications:	WB, IHC
Recommended Dilutions:	WB: 1:1,000, IHC: 1:150
Reactivity:	Mouse, Rat
Immunogen:	Synthetic peptide from the N-terminal of Rat ENaC alpha (aa. 46-68).
Host:	Mouse
Clonality:	Monoclonal
Clone ID:	14E10
Isotype:	IgG1
Conjugate:	Unconjugated
Purification:	Protein G purification.
Concentration:	1 mg/ml
Molecular Weight:	~85 kDa
Product Form:	Liquid
Formulation:	Supplied in Phosphate Buffered Saline, pH 7.4, with 50% Glycerol and 0.09% Sodium Azide.
Storage:	Shipped at 4°C. Upon delivery aliquot and store at -20°C. Avoid freeze / thaw cycles.
Disclaimer:	This product is for research use only. It is not intended for diagnostic or therapeutic use.

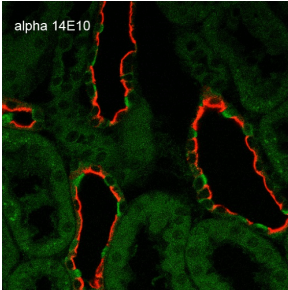
Images:



Western blot analysis of mouse whole kidney homogenates showing detection of ~85kDa ENaC alpha protein using Anti-SCNN1A Antibody [14E10] (A305187) at 1:1,000. Lane 1: Molecular Weight Ladder (MW). Lane 2: Low-salt diet. Lane 3: Normal-salt diet. Load: 20 µg. Predicted/Observed Size: ~85kDa.

Anti-SCNN1A Antibody [14E10] (A305187)

Images continued:



Immunohistochemistry analysis of rat kidney, fixed in formalin and paraffin-embedded. The Primary Antibody used was Anti-SCNN1A Antibody [14E10] (A305187) at 1:100. The secondary antibody used was Goat Anti-Mouse ATTO 488 (green). Localization: Intercalated cells. Aquaporin 2 Antibody staining in red.