

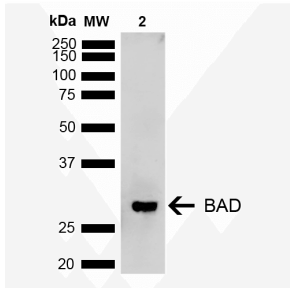
Anti-Bad Antibody (A305211)

Specifications:

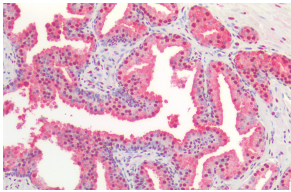
Name:	Anti-Bad Antibody
Description:	Rabbit polyclonal antibody to Bad.
Specificity:	Band is higher than the predicted molecular weight due to post translational modifications.
Applications:	WB, IHC
Recommended Dilutions:	WB: 1:1,000
Reactivity:	Rat, Human
Immunogen:	Synthetic peptide from the mid-protein of Human BAD (aa. 60-90).
Host:	Rabbit
Clonality:	Polyclonal
Isotype:	IgG
Conjugate:	Unconjugated
Purification:	Peptide affinity purification.
Concentration:	1 mg/ml
Molecular Weight:	28 kDa
Product Form:	Liquid
Formulation:	Supplied in Phosphate Buffered Saline, pH 7.4, with 50% Glycerol and 0.09% Sodium Azide.
Storage:	Shipped at 4°C. Upon delivery aliquot and store at -20°C. Avoid freeze / thaw cycles.
Disclaimer:	This product is for research use only. It is not intended for diagnostic or therapeutic use.

Anti-Bad Antibody (A305211)

Images:



Western blot analysis of rat kidney showing detection of ~18.3 kDa BAD protein using Anti-Bad Antibody (A305211) at 1:1,000 for 2 hours at room temperature. Lane 1: Molecular Weight Ladder (MW). Lane 2: rat Kidney. Load: 15 µg. Block: 5% Skim Milk in 1X TBST. The secondary antibody used was Goat Anti-Rabbit IgG: HRP at 1:3000 for 1 hour at room temperature. Color Development: ECL solution for 5 minutes at room temperature. Predicted/Observed Size: ~18.3 kDa. Other Band(s): 28 kDa (PTM).



Immunohistochemistry analysis of human prostate, fixed in formalin and paraffin-embedded. The Primary Antibody used was Anti-Bad Antibody (A305211).