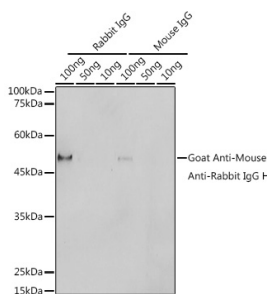


Goat Anti-Mouse, Rabbit IgG Antibody (A305252)

Specifications:

| | |
|------------------------|--|
| Name: | Goat Anti-Mouse, Rabbit IgG Antibody |
| Description: | Goat Anti-Mouse, Rabbit IgG Antibody. |
| Host Species: | Goat |
| Target Species: | Mouse, Rabbit |
| Applications: | WB |
| Recommended Dilutions: | WB: 1:500-1:2,000 |
| Immunogen: | A synthetic peptide corresponding to a sequence within both Mouse IgG and Rabbit IgG. |
| Clonality: | Polyclonal |
| Isotype: | IgG |
| Conjugate: | Unconjugated |
| Product Form: | Liquid |
| Purification: | Affinity purification. |
| Formulation: | Supplied in Phosphate Buffered Saline, pH 7.3, with 50% Glycerol and 0.01% Thiomersal. |
| Storage: | Shipped at 4°C. Upon delivery aliquot and store at -20°C. Avoid freeze / thaw cycles. |
| Disclaimer: | This product is for research use only. It is not intended for diagnostic or therapeutic use. |

Images:



Western blot analysis of extracts of various cell lines, using Goat Anti-Mouse, Rabbit IgG Antibody (A305252) at 1:1,000 dilution. Lysates/proteins: 25µg per lane. Blocking buffer: 3% non-fat dry milk in TBST. Detection was with an ECL Basic Kit. Exposure time: 1s.