

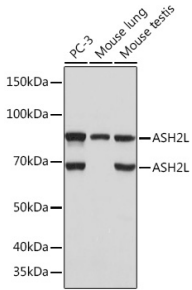
## Anti-ASH2L Antibody [ARC0326] (A305306)

### Specifications:

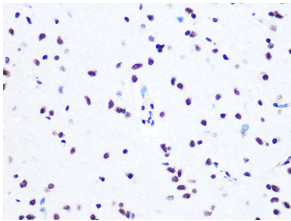
Name:	Anti-ASH2L Antibody [ARC0326]
Description:	Rabbit monoclonal [ARC0326] antibody to ASH2L.
Applications:	WB, IHC, ICC/IF
Recommended Dilutions:	WB: 1:500-1:2,000, IHC: 1:50-1:200, ICC/IF: 1:50-1:200
Reactivity:	Human, Mouse, Rat
Immunogen:	A synthetic peptide corresponding to a sequence within amino acids 529-628 of human ASH2L (Q9UBL3).
Sequence:	AEKSLKQTPHSEIIFYKNGVNGQGVAYKIDIFEGVYFPAISLYKSCTVSINFGPCFKYPP KDLTYRPMSDMGWGAVVEHTLADVLYHVETEVDGRRSPPWEP
Host:	Rabbit
Clonality:	Monoclonal
Clone ID:	ARC0326
Isotype:	IgG
Conjugate:	Unconjugated
Purification:	Affinity purification.
Molecular Weight:	65 kDa / 80 kDa
Product Form:	Liquid
Formulation:	Supplied in Phosphate Buffered Saline, pH 7.3, with 50% Glycerol, 0.05% BSA, and 0.02% Sodium Azide.
Storage:	Shipped at 4°C. Upon delivery aliquot and store at -20°C. Avoid freeze / thaw cycles.
Disclaimer:	This product is for research use only. It is not intended for diagnostic or therapeutic use.

## Anti-ASH2L Antibody [ARC0326] (A305306)

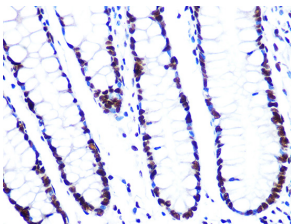
### Images:



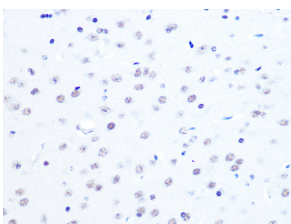
Western blot analysis of extracts of various cell lines, using Anti-ASH2L Antibody [ARC0326] (A305306) at 1:1,000 dilution. The secondary antibody was Goat Anti-Rabbit IgG H&L Antibody (HRP) at 1:10,000 dilution. Lysates/proteins were present at 25µg per lane. The blocking buffer used was 3% non-fat dry milk in TBST. Detection was with a ECL Basic Kit. Exposure time: 5s.



Immunohistochemistry analysis of paraffin-embedded rat brain using Anti-ASH2L Antibody [ARC0326] (A305306) at a dilution of 1:100 (40x lens). Perform microwave antigen retrieval with 10 mM PBS buffer pH 7.2 before commencing with IHC staining protocol.



Immunohistochemistry analysis of paraffin-embedded human colon tissue using Anti-ASH2L Antibody [ARC0326] (A305306) at a dilution of 1:100 (40x lens). Perform microwave antigen retrieval with 10 mM PBS buffer pH 7.2 before commencing with IHC staining protocol.



Immunohistochemistry analysis of paraffin-embedded mouse brain using Anti-ASH2L Antibody [ARC0326] (A305306) at a dilution of 1:100 (40x lens). Perform microwave antigen retrieval with 10 mM PBS buffer pH 7.2 before commencing with IHC staining protocol.