

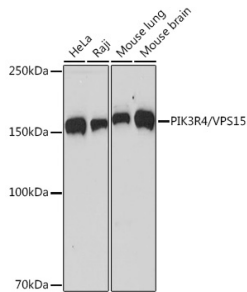
## Anti-VPS15 Antibody [ARC2090] (A305330)

### Specifications:

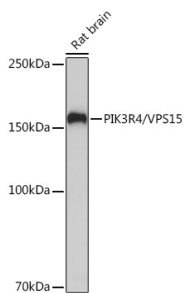
Name:	Anti-VPS15 Antibody [ARC2090]
Description:	Rabbit monoclonal [ARC2090] antibody to VPS15.
Applications:	WB, ICC/IF
Recommended Dilutions:	WB: 1:500-1:2,000, ICC/IF: 1:50-1:200
Reactivity:	Human, Mouse, Rat
Immunogen:	A synthetic peptide corresponding to a sequence within amino acids 1259-1358 of human PIK3R4/VPS15 (Q99570).
Sequence:	AGSDMKIRFWDLAYPERSYVVAGSTSSPSVSYRKKIEGTEVVQEIQNKQKVGPSDDT PRRGPELSPVGHHDIIITDVATFQTTQGFIVTASRDGIVKVWK
Host:	Rabbit
Clonality:	Monoclonal
Clone ID:	ARC2090
Isotype:	IgG
Conjugate:	Unconjugated
Purification:	Affinity purification.
Molecular Weight:	153 kDa
Product Form:	Liquid
Formulation:	Supplied in Phosphate Buffered Saline, pH 7.3, with 50% Glycerol, 0.05% BSA, and 0.02% Sodium Azide.
Storage:	Shipped at 4°C. Upon delivery aliquot and store at -20°C. Avoid freeze / thaw cycles.
Disclaimer:	This product is for research use only. It is not intended for diagnostic or therapeutic use.

## Anti-VPS15 Antibody [ARC2090] (A305330)

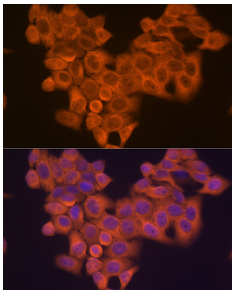
### Images:



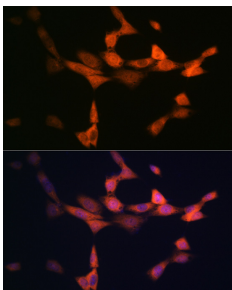
Western blot analysis of extracts of various cell lines, using Anti-VPS15 Antibody [ARC2090] (A305330) at 1:1,000 dilution. The secondary antibody was Goat Anti-Rabbit IgG H&L Antibody (HRP) at 1:10,000 dilution. Lysates/proteins were present at 25µg per lane. The blocking buffer used was 3% non-fat dry milk in TBST. Detection was with a ECL Basic Kit. Exposure time: 60s.



Western blot analysis of extracts of Rat brain, using Anti-VPS15 Antibody [ARC2090] (A305330) at 1:1,000 dilution. The secondary antibody was Goat Anti-Rabbit IgG H&L Antibody (HRP) at 1:10,000 dilution. Lysates/proteins were present at 25µg per lane. The blocking buffer used was 3% non-fat dry milk in TBST. Detection was with a ECL Basic Kit. Exposure time: 180s.



Immunofluorescence analysis of HeLa cells using Anti-VPS15 Antibody [ARC2090] (A305330) at a dilution of 1:100 (40x lens). DAPI was used to stain the cell nuclei (blue).



Immunofluorescence analysis of NIH-3T3 cells using Anti-VPS15 Antibody [ARC2090] (A305330) at a dilution of 1:100 (40x lens). DAPI was used to stain the cell nuclei (blue).