

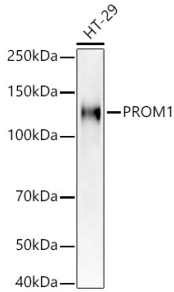
Anti-CD133 Antibody (A305371)

Specifications:

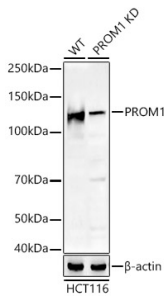
Name:	Anti-CD133 Antibody
Description:	Rabbit polyclonal antibody to CD133.
Applications:	WB, IHC, ICC/IF, IP
Recommended Dilutions:	WB: 1:100-1:500, IHC: 1:50-1:200, IP: 1:500-1:1,000, ICC/IF: 1:50-1:200
Reactivity:	Human, Rat
Immunogen:	Recombinant fusion protein containing a sequence corresponding to amino acids 179-433 of human PROM1 (NP_006008.1).
Sequence:	ANHQVRTRIKRSRKLADSNFKDLRLLNETPEQIKYILAQYNTTKDKAFTDLNSINSV LGGGILDRLRPNIIPVLDEIKSMATAIKETKEALENMNSTLKSLHQQSTQLSSSLTSV KTSLRSSLNDPLCLVHPSSSETCNSIRLSLSQLNSNPELRQLPPVDAELDNVNNVLRD LDGLVQQGYQSLNDIPDRVQRQTTTVVAGIKRVLNSIGSDIDNVTQRLPIQDILSAFS VYVNNTESYIHRNLPTLEEYDSY
Host:	Rabbit
Clonality:	Polyclonal
Isotype:	IgG
Conjugate:	Unconjugated
Purification:	Affinity purification.
Molecular Weight:	120 kDa
Product Form:	Liquid
Formulation:	Supplied in Phosphate Buffered Saline, pH 7.3, with 50% Glycerol and 0.05% Proclin 300.
Storage:	Shipped at 4°C. Upon delivery aliquot and store at -20°C. Avoid freeze / thaw cycles.
Disclaimer:	This product is for research use only. It is not intended for diagnostic or therapeutic use.

Anti-CD133 Antibody (A305371)

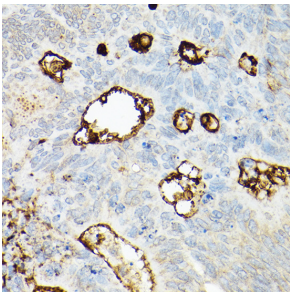
Images:



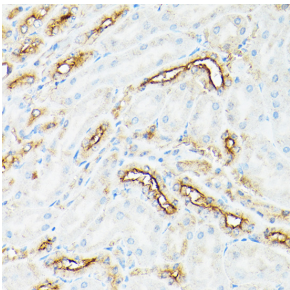
Western blot analysis of extracts of HT-29 cells, using Anti-CD133 Antibody (A305371) at 1:400 dilution. The secondary antibody was Goat Anti-Rabbit IgG H&L Antibody (HRP) at 1:10,000 dilution. Lysates/proteins were present at 25 μ g per lane. The blocking buffer used was 3% non-fat dry milk in TBST. Detection was with a ECL Basic Kit. Exposure time: 90s.



Western blot analysis of extracts from wild type(WT) and PROM1 knockdown (KD) HCT116 cells, using Anti-CD133 Antibody (A305371) at 1:400 dilution. The secondary antibody was Goat Anti-Rabbit IgG H&L Antibody (HRP) at 1:10,000 dilution. Lysates/proteins were present at 25 μ g per lane. The blocking buffer used was 3% non-fat dry milk in TBST. Detection was with a ECL Basic Kit. Exposure time: 90s.



Immunohistochemistry analysis of paraffin-embedded human colon carcinoma tissue using Anti-CD133 Antibody (A305371) at a dilution of 1:200 (40x lens). Perform high pressure antigen retrieval with 10 mM citrate buffer pH 6.0 before commencing with IHC staining protocol.



Immunohistochemistry analysis of paraffin-embedded rat kidney using Anti-CD133 Antibody (A305371) at a dilution of 1:200 (40x lens). Perform high pressure antigen retrieval with 10 mM citrate buffer pH 6.0 before commencing with IHC staining protocol.