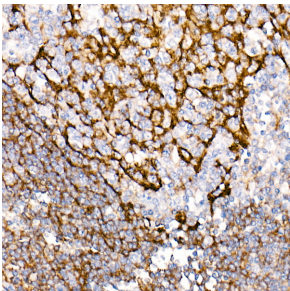


Anti-CD35 Antibody [ARC2065] (A305576)

Specifications:

Name:	Anti-CD35 Antibody [ARC2065]
Description:	Rabbit monoclonal [ARC2065] antibody to CD35.
Applications:	IHC, ICC/IF
Recommended Dilutions:	IHC: 1:50-1:200, ICC/IF: 1:50-1:200
Reactivity:	Human, Mouse, Rat
Immunogen:	A synthetic peptide corresponding to a sequence within amino acids 1940-2039 of human CD35/CR1 (P17927).
Sequence:	DGYTLEGSPWSQCQADDRWDPPLAKCTSRTHDALIVGTLSGTIFFILLIIFLSWILK HRKGNNAHENPKEVAIHLHSQGGSSVHPRTLQTNEENSRVLP
Host:	Rabbit
Clonality:	Monoclonal
Clone ID:	ARC2065
Isotype:	IgG
Conjugate:	Unconjugated
Purification:	Affinity purification.
Product Form:	Liquid
Formulation:	Supplied in Phosphate Buffered Saline, pH 7.3, with 50% Glycerol, 0.05% BSA, and 0.02% Sodium Azide.
Storage:	Shipped at 4°C. Upon delivery aliquot and store at -20°C. Avoid freeze / thaw cycles.
Disclaimer:	This product is for research use only. It is not intended for diagnostic or therapeutic use.

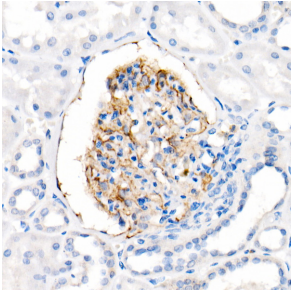
Images:



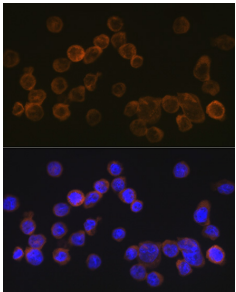
Immunohistochemistry analysis of paraffin-embedded human tonsil using Anti-CD35 Antibody [ARC2065] (A305576) at a dilution of 1:50(40x lens). Perform high pressure antigen retrieval with 10 mM citrate buffer pH 6.0 before commencing with IHC staining protocol.

Anti-CD35 Antibody [ARC2065] (A305576)

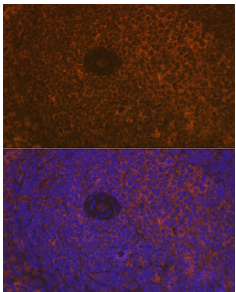
Images continued:



Immunohistochemistry analysis of paraffin-embedded human kidney using Anti-CD35 Antibody [ARC2065] (A305576) at a dilution of 1:50 (40x lens). Perform high pressure antigen retrieval with 10 mM citrate buffer pH 6.0 before commencing with IHC staining protocol.



Immunofluorescence analysis of THP-1 cells using Anti-CD35 Antibody [ARC2065] (A305576) at a dilution of 1:100 (40x lens). DAPI was used to stain the cell nuclei (blue).



Immunofluorescence analysis of rat spleen using Anti-CD35 Antibody [ARC2065] (A305576) at a dilution of 1:100 (40x lens). DAPI was used to stain the cell nuclei (blue).