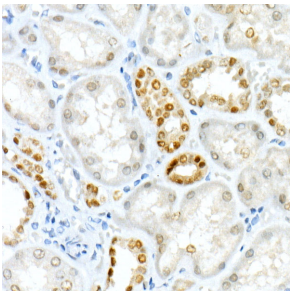


## Anti-PAX8 Antibody [ARC55538] (A305642)

### Specifications:

Name:	Anti-PAX8 Antibody [ARC55538]
Description:	Rabbit monoclonal [ARC55538] antibody to PAX8.
Applications:	IHC
Recommended Dilutions:	IHC: 1:100-1:500
Reactivity:	Human
Immunogen:	A synthetic peptide corresponding to a sequence within amino acids 200-300 of human PAX8 (NP_003457.1).
Sequence:	DSDQDSCRLSIDSSSSGPRKHLRTDAFSQHHLEPLECPFERQHYPEAYASPSHTKG EQGLYPLPLLNSTLDDGKATLTPSNTPLGRNLSTHQ TYPVVAD
Host:	Rabbit
Clonality:	Monoclonal
Clone ID:	ARC55538
Isotype:	IgG
Conjugate:	Unconjugated
Purification:	Affinity purification.
Product Form:	Liquid
Formulation:	Supplied in Phosphate Buffered Saline, pH 7.3, with 50% Glycerol, 0.05% BSA, and 0.05% Proclin 300.
Storage:	Shipped at 4°C. Upon delivery aliquot and store at -20°C. Avoid freeze / thaw cycles.
Disclaimer:	This product is for research use only. It is not intended for diagnostic or therapeutic use.

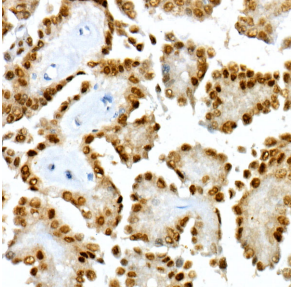
### Images:



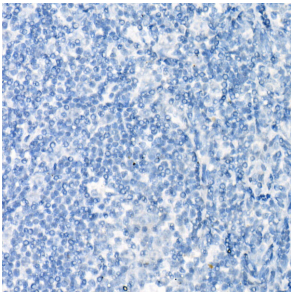
Immunohistochemistry analysis of paraffin-embedded human kidney using Anti-PAX8 Antibody [ARC55538] (A305642) at a dilution of 1:300 (40x lens). Perform high pressure antigen retrieval with 10 mM citrate buffer pH 6.0 before commencing with IHC staining protocol.

## Anti-PAX8 Antibody [ARC55538] (A305642)

Images continued:



Immunohistochemistry analysis of paraffin-embedded human thyroid cancer using Anti-PAX8 Antibody [ARC55538] (A305642) at a dilution of 1:300 (40x lens). Perform high pressure antigen retrieval with 10 mM citrate buffer pH 6.0 before commencing with IHC staining protocol.



Immunohistochemistry analysis of paraffin-embedded human tonsil (negative control sample) using Anti-PAX8 Antibody [ARC55538] (A305642) at a dilution of 1:300 (40x lens). Perform high pressure antigen retrieval with 10 mM citrate buffer pH 6.0 before commencing with IHC staining protocol.