

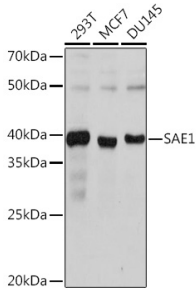
## Anti-SAE1 Antibody [ARC1846] (A305649)

### Specifications:

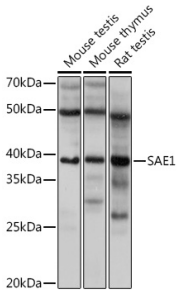
|                        |   |
|------------------------|---|
| Name:                  | Anti-SAE1 Antibody [ARC1846]  |
| Description:           | Rabbit monoclonal [ARC1846] antibody to SAE1.   |
| Applications:          | WB  |
| Recommended Dilutions: | WB: 1:500-1:2,000   |
| Reactivity:            | Human, Mouse, Rat   |
| Immunogen:             | A synthetic peptide corresponding to a sequence within amino acids 200-300 of human SAE1 (Q9UBE0).          |
| Sequence:              | DSSETTMVKKKVVFCPVKEALEVDWSSEKAKAALKRTTSDYFLLQVLLKFRTDKGRDP<br>SSDTYEEDSELLLQIRNDVLDVLSLGISPDLLPEDFVRYCFSEMA |
| Host:                  | Rabbit  |
| Clonality:             | Monoclonal  |
| Clone ID:              | ARC1846   |
| Isotype:               | IgG   |
| Conjugate:             | Unconjugated  |
| Purification:          | Affinity purification.  |
| Molecular Weight:      | 40 kDa  |
| Product Form:          | Liquid  |
| Formulation:           | Supplied in Phosphate Buffered Saline, pH 7.3, with 50% Glycerol, 0.05% BSA, and 0.02% Sodium Azide.        |
| Storage:               | Shipped at 4°C. Upon delivery aliquot and store at -20°C. Avoid freeze / thaw cycles.                       |
| Disclaimer:            | This product is for research use only. It is not intended for diagnostic or therapeutic use.                |

## Anti-SAE1 Antibody [ARC1846] (A305649)

### Images:



Western blot analysis of extracts of various cell lines, using Anti-SAE1 Antibody [ARC1846] (A305649) at 1:1,000 dilution. The secondary antibody was Goat Anti-Rabbit IgG H&L Antibody (HRP) at 1:10,000 dilution. Lysates/proteins were present at 25µg per lane. The blocking buffer used was 3% non-fat dry milk in TBST. Detection was with a ECL Basic Kit. Exposure time: 1s.



Western blot analysis of extracts of various cell lines, using Anti-SAE1 Antibody [ARC1846] (A305649) at 1:1,000 dilution. The secondary antibody was Goat Anti-Rabbit IgG H&L Antibody (HRP) at 1:10,000 dilution. Lysates/proteins were present at 25µg per lane. The blocking buffer used was 3% non-fat dry milk in TBST. Detection was with a ECL Basic Kit. Exposure time: 5s.