

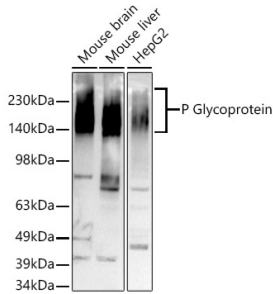
Anti-P Glycoprotein Antibody [ARC0470] (A305706)

Specifications:

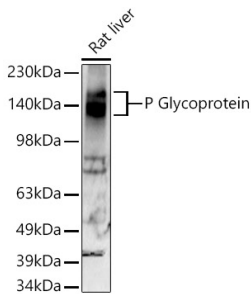
Name:	Anti-P Glycoprotein Antibody [ARC0470]
Description:	Rabbit monoclonal [ARC0470] antibody to P Glycoprotein.
Applications:	WB, IHC
Recommended Dilutions:	WB: 1:100-1:500, IHC: 1:50-1:200
Reactivity:	Human, Mouse, Rat
Immunogen:	Recombinant fusion protein containing a sequence corresponding to amino acids 393-710 of human P Glycoprotein (P08183).
Sequence:	EFRNVHFSYPSRKEVKILKGLNLKVQSGQTVALVGNISGCGKSTTVQLMQRLYDPTEGM VSVDGQDIRTINVRFLEIIGVVVSQEPVLFATTIAENIRYGRENVMTDEIEKAVKEAN AYDFIMKLPKFDLTVGERGAQLSGGQKQRIAIARALVRNPKILLDEATSALDTESE AVVQVALDKARKGRRTTIVIAHRLSTVRNADVIAGFDDGVIVEKGNHDELMKEKGIYFK LVTMQTAGNEVELENAADESKSEIDALEMSSNDSRSSLRKRSTRRSVRGSAQDRKL STKEALDESIPPVSFWRIMKLNLTWPY
Host:	Rabbit
Clonality:	Monoclonal
Clone ID:	ARC0470
Isotype:	IgG
Conjugate:	Unconjugated
Purification:	Affinity purification.
Molecular Weight:	130 - 180 kDa
Product Form:	Liquid
Formulation:	Supplied in Phosphate Buffered Saline, pH 7.3, with 50% Glycerol, 0.05% BSA, and 0.02% Sodium Azide.
Storage:	Shipped at 4°C. Upon delivery aliquot and store at -20°C. Avoid freeze / thaw cycles.
Disclaimer:	This product is for research use only. It is not intended for diagnostic or therapeutic use.

Anti-P Glycoprotein Antibody [ARC0470] (A305706)

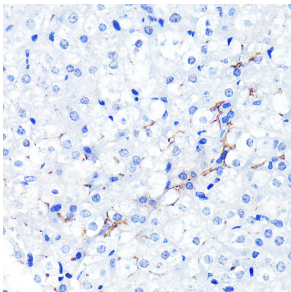
Images:



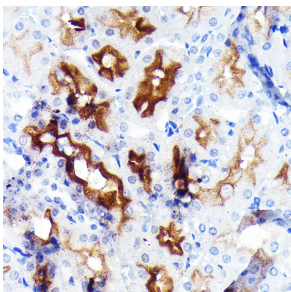
Western blot analysis of extracts of various cell lines, using Anti-P Glycoprotein Antibody [ARC0470] (A305706) at 1:500 dilution. The secondary antibody was Goat Anti-Rabbit IgG H&L Antibody (HRP) at 1:10,000 dilution. Lysates/proteins were present at 25 μ g per lane. The blocking buffer used was 3% non-fat dry milk in TBST. Detection was with a ECL Basic Kit. Exposure time: 180s.



Western blot analysis of extracts of Rat liver, using Anti-P Glycoprotein Antibody [ARC0470] (A305706) at 1:500 dilution. The secondary antibody was Goat Anti-Rabbit IgG H&L Antibody (HRP) at 1:10,000 dilution. Lysates/proteins were present at 25 μ g per lane. The blocking buffer used was 3% non-fat dry milk in TBST. Detection was with a ECL Enhanced Kit (RM00021). Exposure time: 90s.



Immunohistochemistry analysis of paraffin-embedded mouse liver using Anti-P Glycoprotein Antibody [ARC0470] (A305706) at a dilution of 1:100 (40x lens). Perform microwave antigen retrieval with 10 mM PBS buffer pH 7.2 before commencing with IHC staining protocol.



Immunohistochemistry analysis of paraffin-embedded rat kidney using Anti-P Glycoprotein Antibody [ARC0470] (A305706) at a dilution of 1:100 (40x lens). Perform microwave antigen retrieval with 10 mM PBS buffer pH 7.2 before commencing with IHC staining protocol.