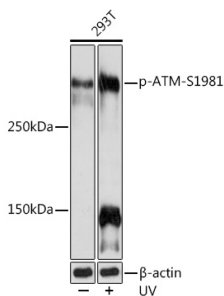


Anti-ATM (phospho Ser1981) Antibody [ARC1575] (A305716)

Specifications:

Name:	Anti-ATM (phospho Ser1981) Antibody [ARC1575]
Description:	Rabbit monoclonal [ARC1575] antibody to ATM (phospho Ser1981).
Applications:	WB
Recommended Dilutions:	WB: 1:500-1:2,000
Reactivity:	Human
Immunogen:	A synthetic phosphorylated peptide around S1981 of human ATM (Q13315).
Sequence:	EGSQS
Host:	Rabbit
Clonality:	Monoclonal
Clone ID:	ARC1575
Isotype:	IgG
Conjugate:	Unconjugated
Purification:	Affinity purification.
Molecular Weight:	350 kDa
Product Form:	Liquid
Formulation:	Supplied in Phosphate Buffered Saline, pH 7.3, with 50% Glycerol, 0.05% BSA, and 0.02% Sodium Azide.
Storage:	Shipped at 4°C. Upon delivery aliquot and store at -20°C. Avoid freeze / thaw cycles.
Disclaimer:	This product is for research use only. It is not intended for diagnostic or therapeutic use.

Images:



Western blot analysis of extracts of 293T cells, using Anti-ATM (phospho Ser1981) Antibody [ARC1575] (A305716) at 1:1,000 dilution. 293T cells were treated by UV at room temperature for 15-30 minutes. The secondary antibody was Goat Anti-Rabbit IgG H&L Antibody (HRP) at 1:10,000 dilution. Lysates/proteins were present at 25µg per lane. The blocking buffer used was 3% BSA. Detection was with a ECL Enhanced Kit (RM00021). Exposure time: 3min.