

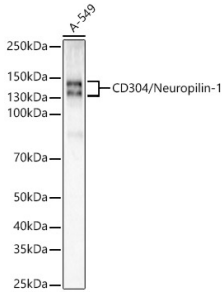
Anti-Neuropilin 1 Antibody [ARC55415] (A305913)

Specifications:

| | |
|------------------------|---|
| Name: | Anti-Neuropilin 1 Antibody [ARC55415] |
| Description: | Rabbit monoclonal [ARC55415] antibody to Neuropilin 1. |
| Applications: | WB |
| Recommended Dilutions: | WB: 1:1,000-1:5,000 |
| Reactivity: | Human |
| Immunogen: | Recombinant fusion protein containing a sequence corresponding to amino acids 22-644 of human Neuropilin-1 (NRP1) (NP_003864.5). |
| Sequence: | FRNDKCGDTIKIESPGYLTSPGYPHSYHPSEKCEWLIQAPDPYQRIMINFNPHFDLED RDCKYDYVEVFDGENENGFHFRGKFCGKIAPPPVSSGPFLFIKFVSDYETHGAGFSIR YEIFKRGPECSQNYTTSPGVIKSPGFPEKYPNSLECTYIVFVPMSEIILEFESFDLE PDSNPPGGMFCRYDRLEIWDGFPDVGPHIGRYCGQKTPGRIRSSSGILSMVFYTDSAI AKEGFSANYSVLQSSVSEDFKCMEALGMESGEIHSDQITASSQYSTNWSAERSRLNYP ENGWTPGEDSYREWIQVDLGLLRFVTAVGTQGAISKETKKKYYVKTYKIDVSSNGEDW ITIKEGNKPVLFQGNTNPTDVVVAVFPKPLITRFVRIKPATWETGISMRFEVYGCKIT DYPCSGMLGMVSGLISDSQITSSNQGDRNWMPENIRLVTSRSGWALPPAPHSYILQID LGEEKIVRGIHQGGKHRENKVFMRKFKIGYSNNGSDWKMMIMDDSKRKAJSFEGNNNY DTPELRTFPALSTRFIRIYPERATHGGLGLRMELLGCEVEAPTAGPTTPNGNLVDECD DDQANCHSGTGDDFQLTGGTTVLATEKPTVIDSTIQSEFP |
| Host: | Rabbit |
| Clonality: | Monoclonal |
| Clone ID: | ARC55415 |
| Isotype: | IgG |
| Conjugate: | Unconjugated |
| Purification: | Affinity purification. |
| Molecular Weight: | 120 - 135 kDa |
| Product Form: | Liquid |
| Formulation: | Supplied in Phosphate Buffered Saline, pH 7.3, with 50% Glycerol, 0.05% BSA, and 0.05% Proclin 300. |
| Storage: | Shipped at 4°C. Upon delivery aliquot and store at -20°C. Avoid freeze / thaw cycles. |
| Disclaimer: | This product is for research use only. It is not intended for diagnostic or therapeutic use. |

Anti-Neuropilin 1 Antibody [ARC55415] (A305913)

Images:



Western blot analysis of A-549, using Anti-Neuropilin 1 Antibody [ARC55415] (A305913) at 1:2,000 dilution. The secondary antibody was Goat Anti-Rabbit IgG H&L Antibody (HRP) at 1:200000 dilution. Lysates/proteins were present at 25 μ g per lane. The blocking buffer used was 3% non-fat dry milk in TBST. Detection was with a ECL Enhanced Kit (RM00021). Exposure time: 30s.