

Anti-CD13 Antibody [ARC53706] (A306365)

Specifications:

Name:	Anti-CD13 Antibody [ARC53706]
Description:	Rabbit monoclonal [ARC53706] antibody to CD13.
Applications:	WB, IHC, Flow Cytometry
Recommended Dilutions:	WB: 1:10,000-1:40,000, IHC: 1:50-1:200, Flow Cytometry: 1:50-1:200
Reactivity:	Human
Immunogen:	Recombinant fusion protein containing a sequence corresponding to amino acids 69-967 of human CD13/ANPEP (NP_001141.2).
Sequence:	<p>KAWNRYRLPNTLKPDSYRVTLRPYLTPNDRGLYVFKGSSTVRFTCKEATDVIIIHSKK LNYTLSQGHRVVLGRVGGGQPPDIDKTELVEPTEYLVVHLKGSVVKDSQYEMDSEFEG ELADDLAGFYRSEYMEGNVRKVVATTQMQAADARKSFPCFDEPAMKAEFNITLIHPKD LTALSNMLPKGPSTPLPEDPNWNVTEFHHTTPKMSTYLLAFIVSEFDYVEKQASNGVLI RIWARPSAIAAGHG DYALNVTGPILNFFAGHYDTPYPLPKSDQIGLPDFNAGAMENWG LVTYRENSLLFDPLSSSSSNKERVVTVIAHELAHQWFGNLVTIEWWDLWLNENGFASY VEYLGADYAEPTWNLKDLMLVNDVYRVMVDALASSHPLSTPASEINTPAQISELFD ISYKSGASVLRMLSSFLSEDFKQGLASYLHTFAYQNTIYLNLDHLEAVNNRSIQL PTTVRDIMNRWTLQMGFPVITVDTSTGTLSQEHLFLDPDSNVTRPSEFNYYVWIVPITS IRDGRQQDYWLIDVRAQNDFSTSGVLLNLNVTGYRVVNYDEENWRKIQTQLQRDHS AIPVINRAQIINDAFNLASAHKVPVTLALNNTLFLIEERQYMPWEAALSSLSYFKLMF DRSEVYGPMKNYLKKQVTPLFIFHRNNTNNWREIPENLMDQYSEVNAISTACSNVPE CEEMVSGLFKQWMENPNNNPIHPNLRSTVYCNAIAQGGEEWDFAWEQFRNATLVNEA DKLRAALACSKELWILNRYLSYTLNPDILIRKQDATSTIISITNNVIGQGLVWDFVQSN WKKLFNDYGGGSFSSNLIQAVTRRFSTEYELQQLQEQFKKDNEETGFGSGTRALEQAL EKTKANIKWVKENKEVVLQWFTENSK</p>
Host:	Rabbit
Clonality:	Monoclonal
Clone ID:	ARC53706
Isotype:	IgG
Conjugate:	Unconjugated
Purification:	Affinity purification.
Molecular Weight:	150 kDa
Product Form:	Liquid
Formulation:	Supplied in Phosphate Buffered Saline, pH 7.3, with 50% Glycerol, 0.05% BSA, and 0.05% Proclin 300.
Storage:	Shipped at 4°C. Upon delivery aliquot and store at -20°C. Avoid freeze / thaw cycles.

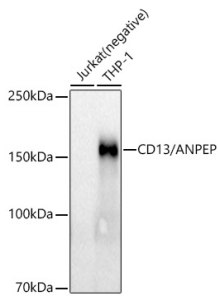
Anti-CD13 Antibody [ARC53706] (A306365)

Specifications continued:

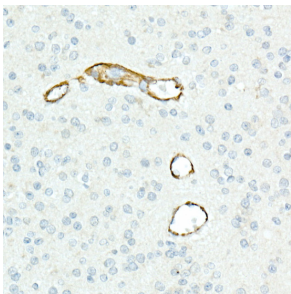
Disclaimer:

This product is for research use only. It is not intended for diagnostic or therapeutic use.

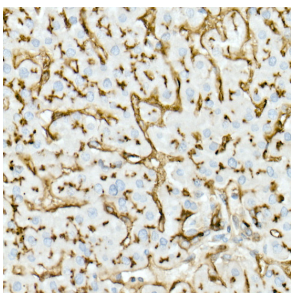
Images:



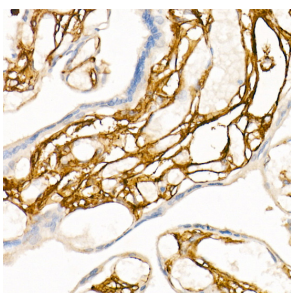
Western blot analysis of extracts of various cell lines, using Anti-CD13 Antibody [ARC53706] (A306365) at 1:40,000 dilution. The secondary antibody was Goat Anti-Rabbit IgG H&L Antibody (HRP) at 1:10,000 dilution. Lysates/proteins were present at 25µg per lane. The blocking buffer used was 3% non-fat dry milk in TBST. Detection was with a ECL Basic Kit. Exposure time: 90s.



Immunohistochemistry analysis of paraffin-embedded human brain tissue using Anti-CD13 Antibody [ARC53706] (A306365) at a dilution of 1:100(40x lens). Perform high pressure antigen retrieval with 10 mM Tris/EDTA buffer pH 9.0 before commencing with IHC staining protocol.



Immunohistochemistry analysis of paraffin-embedded human liver using Anti-CD13 Antibody [ARC53706] (A306365) at a dilution of 1:100(40x lens). Perform high pressure antigen retrieval with 10 mM Tris/EDTA buffer pH 9.0 before commencing with IHC staining protocol.



Immunohistochemistry analysis of paraffin-embedded human placenta using Anti-CD13 Antibody [ARC53706] (A306365) at a dilution of 1:100(40x lens). Perform high pressure antigen retrieval with 10 mM Tris/EDTA buffer pH 9.0 before commencing with IHC staining protocol.