

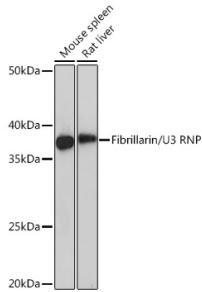
## Anti-Fibrillarin Antibody [ARC0506] (A306505)

### Specifications:

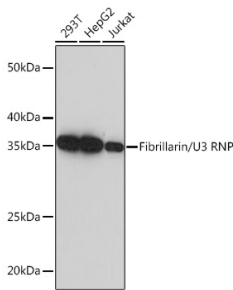
Name:	Anti-Fibrillarin Antibody [ARC0506]
Description:	Rabbit monoclonal [ARC0506] antibody to Fibrillarin.
Applications:	WB, ICC/IF
Recommended Dilutions:	WB: 1:500-1:2,000, ICC/IF: 1:50-1:200
Reactivity:	Human, Mouse, Rat
Immunogen:	A synthetic peptide corresponding to a sequence within amino acids 222-321 of human Fibrillarin/U3 RNP (P22087).
Sequence:	KYRMLIAMVDVIFADVAQPDQTRIVALNAHTFLRNGGHFVISIKANCIDSTASAEAVF ASEVKKMQQENMKPQEQLTLEPYERDHAVVVGVYRPPPKVKN
Host:	Rabbit
Clonality:	Monoclonal
Clone ID:	ARC0506
Isotype:	IgG
Conjugate:	Unconjugated
Purification:	Affinity purification.
Molecular Weight:	37 kDa
Product Form:	Liquid
Formulation:	Supplied in Phosphate Buffered Saline, pH 7.3, with 50% Glycerol, 0.05% BSA, and 0.02% Sodium Azide.
Storage:	Shipped at 4°C. Upon delivery aliquot and store at -20°C. Avoid freeze / thaw cycles.
Disclaimer:	This product is for research use only. It is not intended for diagnostic or therapeutic use.

## Anti-Fibrillarin Antibody [ARC0506] (A306505)

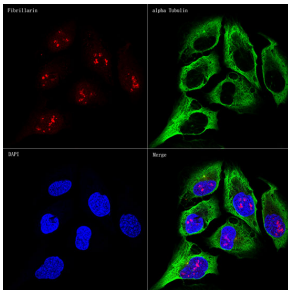
### Images:



Western blot analysis of extracts of various cell lines, using Anti-Fibrillarin Antibody [ARC0506] (A306505) at 1:1,000 dilution. The secondary antibody was Goat Anti-Rabbit IgG H&L Antibody (HRP) at 1:10,000 dilution. Lysates/proteins were present at 25µg per lane. The blocking buffer used was 3% non-fat dry milk in TBST. Detection was with a ECL Basic Kit. Exposure time: 10s.



Western blot analysis of extracts of various cell lines, using Anti-Fibrillarin Antibody [ARC0506] (A306505) at 1:5,000 dilution. The secondary antibody was Goat Anti-Rabbit IgG H&L Antibody (HRP) at 1:10,000 dilution. Lysates/proteins were present at 25µg per lane. The blocking buffer used was 3% non-fat dry milk in TBST. Detection was with a ECL Basic Kit. Exposure time: 5s.



Confocal imaging of U-2OS cells using Anti-Fibrillarin Antibody [ARC0506] (A306505), at a dilution of 1:100, (red). The cells were counterstained with Anti-alpha Tubulin Antibody, at a dilution of 1:400, (green). DAPI was used for nuclear staining (Blue). Objective: 60x.