

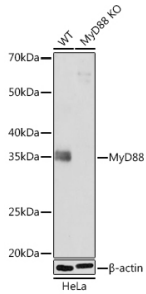
## Anti-MyD88 Antibody [ARC52507] (A306508)

### Specifications:

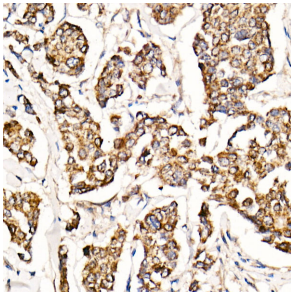
Name:	Anti-MyD88 Antibody [ARC52507]
Description:	Rabbit monoclonal [ARC52507] antibody to MyD88.
Applications:	WB, IHC
Recommended Dilutions:	WB: 1:500-1:2,000, IHC: 1:500-1:1,000
Reactivity:	Human, Mouse, Rat
Immunogen:	A synthetic peptide corresponding to a sequence within amino acids 50-150 of human MyD88 (NP_002459.3).
Sequence:	LAEEMDFEYLEIRQLETQADPTGRLLDAWQGRPGASVGRLLLELLTKLGRDDVLELGP SIEEDCQKYILKQQQEEAEKPLQVAAVDSSVPRTAELAGITTL
Host:	Rabbit
Clonality:	Monoclonal
Clone ID:	ARC52507
Isotype:	IgG
Conjugate:	Unconjugated
Purification:	Affinity purification.
Molecular Weight:	33 kDa
Product Form:	Liquid
Formulation:	Supplied in Phosphate Buffered Saline, pH 7.3, with 50% Glycerol, 0.05% BSA, and 0.05% Proclin 300.
Storage:	Shipped at 4°C. Upon delivery aliquot and store at -20°C. Avoid freeze / thaw cycles.
Disclaimer:	This product is for research use only. It is not intended for diagnostic or therapeutic use.

## Anti-MyD88 Antibody [ARC52507] (A306508)

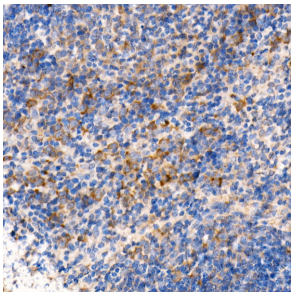
### Images:



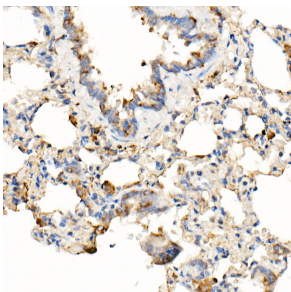
Western blot analysis of extracts from wild type (WT) and MyD88 knockout (KO) HeLa cells, using Anti-MyD88 Antibody [ARC52507] (A306508) at 1:1,000 dilution. The secondary antibody was Goat Anti-Rabbit IgG H&L Antibody (HRP) at 1:10,000 dilution. Lysates/proteins were present at 25µg per lane. The blocking buffer used was 3% non-fat dry milk in TBST. Detection was with a ECL Basic Kit. Exposure time: 3min.



Immunohistochemistry analysis of paraffin-embedded human breast cancer tissue using Anti-MyD88 Antibody [ARC52507] (A306508) at a dilution of 1:1,000 (40x lens). Perform high pressure antigen retrieval with 10 mM citrate buffer pH 6.0 before commencing with IHC staining protocol.



Immunohistochemistry analysis of paraffin-embedded mouse spleen using Anti-MyD88 Antibody [ARC52507] (A306508) at a dilution of 1:1,000 (40x lens). Perform high pressure antigen retrieval with 10 mM citrate buffer pH 6.0 before commencing with IHC staining protocol.



Immunohistochemistry analysis of paraffin-embedded rat lung using Anti-MyD88 Antibody [ARC52507] (A306508) at a dilution of 1:1,000 (40x lens). Perform high pressure antigen retrieval with 10 mM citrate buffer pH 6.0 before commencing with IHC staining protocol.