

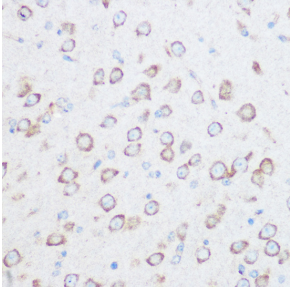
Anti-NG2 Antibody (A306561)

Specifications:

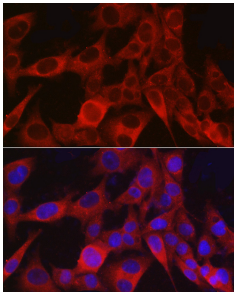
Name:	Anti-NG2 Antibody
Description:	Rabbit polyclonal antibody to NG2.
Applications:	WB, IHC, ICC/IF
Recommended Dilutions:	WB: 1:500-1:2,000, IHC: 1:50-1:200, ICC/IF: 1:50-1:200
Reactivity:	Human, Mouse
Immunogen:	Recombinant fusion protein containing a sequence corresponding to amino acids 1950-2210 of human NG2/CSPG4 (NP_001888.2).
Sequence:	LEVPQALGRSSLSQQQLRVVSDREEPEAAAYRLIQGPQYGHLLVGGRPTSAFSQFQIDQ GEVVFATNFSSSHDHFRVLALARGVNASAVVNVTVRALLHVWAGGPWPQGATLRLDP TVLDAGELANRTGSVPRFRLLEGPRHGRVVRVPRARTEPGGSQQLVEQFTQQDLEDGRL GLEVGRPEGRAPGPAGDSLLELWAQGVPPAVASLDFATEPYNAARPYSVALLSVPEA ARTEAGKPESSTPTGEPGPMASSPEPAVA
Host:	Rabbit
Clonality:	Polyclonal
Isotype:	IgG
Conjugate:	Unconjugated
Purification:	Affinity purification.
Product Form:	Liquid
Formulation:	Supplied in Phosphate Buffered Saline, pH 7.3, with 50% Glycerol and 0.01% Thiomersal.
Storage:	Shipped at 4°C. Upon delivery aliquot and store at -20°C. Avoid freeze / thaw cycles.
Disclaimer:	This product is for research use only. It is not intended for diagnostic or therapeutic use.

Anti-NG2 Antibody (A306561)

Images:



Immunohistochemistry analysis of paraffin-embedded mouse brain using Anti-NG2 Antibody (A306561) at a dilution of 1:100 (40x lens). Perform microwave antigen retrieval with 10 mM Tris/EDTA buffer pH 9.0 before commencing with IHC staining protocol.



Immunofluorescence analysis of A-375 cells using Anti-NG2 Antibody (A306561) at a dilution of 1:100 (40x lens). DAPI was used to stain the cell nuclei (blue).