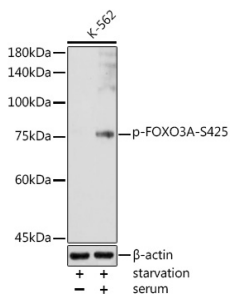


Anti-FOXO3A (phospho Ser425) Antibody (A306586)

Specifications:

Name:	Anti-FOXO3A (phospho Ser425) Antibody
Description:	Rabbit polyclonal antibody to FOXO3A (phospho Ser425).
Applications:	WB, IHC
Recommended Dilutions:	WB: 1:500-1:1,000, IHC: 1:50-1:200
Reactivity:	Human, Mouse, Rat
Immunogen:	A synthetic phosphorylated peptide around S425 of human FOXO3A (NP_001446.1).
Sequence:	LGSPT
Host:	Rabbit
Clonality:	Polyclonal
Isotype:	IgG
Conjugate:	Unconjugated
Purification:	Affinity purification.
Molecular Weight:	82 kDa
Product Form:	Liquid
Formulation:	Supplied in Phosphate Buffered Saline, pH 7.3, with 50% Glycerol and 0.01% Thiomersal.
Storage:	Shipped at 4°C. Upon delivery aliquot and store at -20°C. Avoid freeze / thaw cycles.
Disclaimer:	This product is for research use only. It is not intended for diagnostic or therapeutic use.

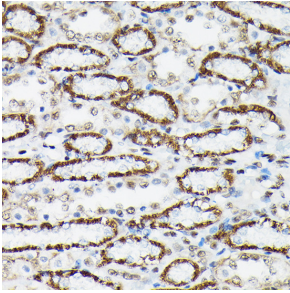
Images:



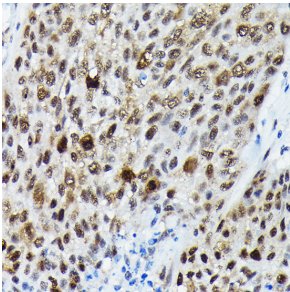
Western blot analysis of extracts of K-562 cells, using Anti-FOXO3A (phospho Ser425) Antibody (A306586) at 1:1,000 dilution. K-562 cells were treated by 10% FBS at 37°C for 30 minutes after serum-starvation overnight. The secondary antibody was Goat Anti-Rabbit IgG H&L Antibody (HRP) at 1:10,000 dilution. Lysates/proteins were present at 25µg per lane. The blocking buffer used was 3% non-fat dry milk in TBST. Detection was with a ECL Basic Kit. Exposure time: 30s.

Anti-FOXO3A (phospho Ser425) Antibody (A306586)

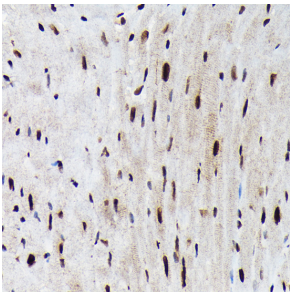
Images continued:



Immunohistochemistry analysis of paraffin-embedded rat kidney using Anti-FOXO3A (phospho Ser425) Antibody (A306586) at a dilution of 1:200 (40x lens). Perform high pressure antigen retrieval with 10 mM citrate buffer pH 6.0 before commencing with IHC staining protocol.



Immunohistochemistry analysis of paraffin-embedded human lung cancer using Anti-FOXO3A (phospho Ser425) Antibody (A306586) at a dilution of 1:200 (40x lens). Perform high pressure antigen retrieval with 10 mM citrate buffer pH 6.0 before commencing with IHC staining protocol.



Immunohistochemistry analysis of paraffin-embedded mouse heart using Anti-FOXO3A (phospho Ser425) Antibody (A306586) at a dilution of 1:200 (40x lens). Perform high pressure antigen retrieval with 10 mM citrate buffer pH 6.0 before commencing with IHC staining protocol.