

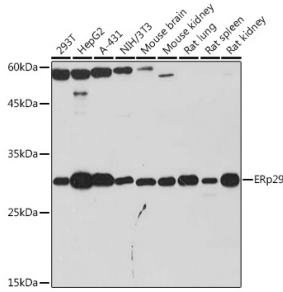
Anti-ERp29 Antibody [ARC2295] (A306789)

Specifications:

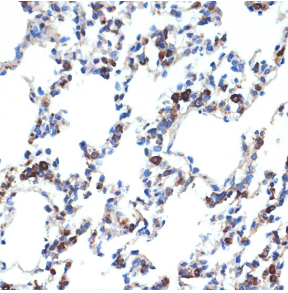
Name:	Anti-ERp29 Antibody [ARC2295]
Description:	Rabbit monoclonal [ARC2295] antibody to ERp29.
Applications:	WB, IHC
Recommended Dilutions:	WB: 1:500-1:2,000, IHC: 1:50-1:200
Reactivity:	Human, Mouse, Rat
Immunogen:	Recombinant fusion protein containing a sequence corresponding to amino acids 1-102 of human ERp29 (P30040).
Sequence:	MAAAVPRAAFLSPLLPLLLGFLLLSAPHGGSGLHTKGALPLDVTVFYKVIPKSKFVLV KFDTQYPYGEKQDEFKRLAENSASSDDLLVAEVGISDYGDKLNLM
Host:	Rabbit
Clonality:	Monoclonal
Clone ID:	ARC2295
Isotype:	IgG
Conjugate:	Unconjugated
Purification:	Affinity purification.
Molecular Weight:	30 kDa
Product Form:	Liquid
Formulation:	Supplied in Phosphate Buffered Saline, pH 7.3, with 50% Glycerol, 0.05% BSA, and 0.02% Sodium Azide.
Storage:	Shipped at 4°C. Upon delivery aliquot and store at -20°C. Avoid freeze / thaw cycles.
Disclaimer:	This product is for research use only. It is not intended for diagnostic or therapeutic use.

Anti-ERp29 Antibody [ARC2295] (A306789)

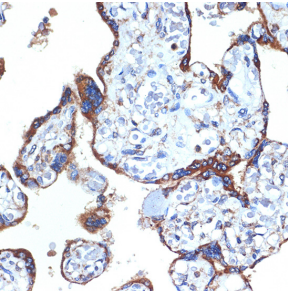
Images:



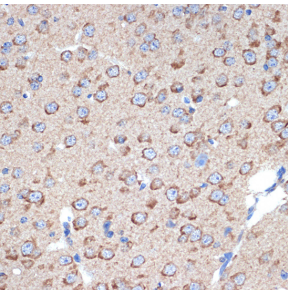
Western blot analysis of extracts of various cell lines, using Anti-ERp29 Antibody [ARC2295] (A306789) at 1:1,000 dilution. The secondary antibody was Goat Anti-Rabbit IgG H&L Antibody (HRP) at 1:10,000 dilution. Lysates/proteins were present at 25µg per lane. The blocking buffer used was 3% non-fat dry milk in TBST. Detection was with a ECL Basic Kit. Exposure time: 180s.



Immunohistochemistry analysis of paraffin-embedded rat lung using Anti-ERp29 Antibody [ARC2295] (A306789) at a dilution of 1:100 (40x lens). Perform microwave antigen retrieval with 10 mM Tris/EDTA buffer pH 9.0 before commencing with IHC staining protocol.



Immunohistochemistry analysis of paraffin-embedded human placenta using Anti-ERp29 Antibody [ARC2295] (A306789) at a dilution of 1:100 (40x lens). Perform microwave antigen retrieval with 10 mM Tris/EDTA buffer pH 9.0 before commencing with IHC staining protocol.



Immunohistochemistry analysis of paraffin-embedded mouse brain using Anti-ERp29 Antibody [ARC2295] (A306789) at a dilution of 1:100 (40x lens). Perform microwave antigen retrieval with 10 mM Tris/EDTA buffer pH 9.0 before commencing with IHC staining protocol.