

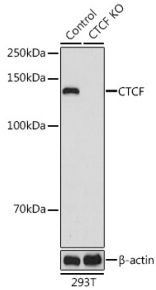
## Anti-CTCF Antibody (A307226)

### Specifications:

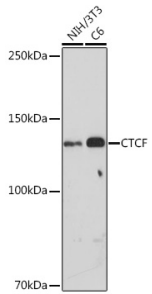
Name:	Anti-CTCF Antibody
Description:	Rabbit polyclonal antibody to CTCF.
Applications:	WB, IHC, IP, ChIP
Recommended Dilutions:	WB: 1:500-1:2,000, IHC: 1:50-1:200, IP: 1:100-1:500, ChIP: 1:100-1:500
Reactivity:	Human, Mouse, Rat
Immunogen:	Recombinant fusion protein containing a sequence corresponding to amino acids 1-260 of human CTCF (NP_006556.1).
Sequence:	MEGDAVEAIVEESETFIKGERKTYQRRREGGQEEDACHLPQNQTDGGGEVVDVNSSV QMVMMEQLDPTLLQMKTEVMEGTVAPEAEAAVDDTQIITLQVVNMEEQPINIGELQLV QVPVPVTVPVATTSVEELQGAYENEVSKEGLAESEPMICHTLPLPEGFQVVKVGANGE VETLEQGELPPQEDPSWQKDPDYQPPAKTKKTKKSKLRYTEEGKDVDVSVYDFEEEQ QEGLLSEVNAEKVVGNMKPPKPTKIKKK
Host:	Rabbit
Clonality:	Polyclonal
Isotype:	IgG
Conjugate:	Unconjugated
Purification:	Affinity purification.
Molecular Weight:	140 kDa
Product Form:	Liquid
Formulation:	Supplied in Phosphate Buffered Saline, pH 7.3, with 50% Glycerol and 0.01% Thiomersal.
Storage:	Shipped at 4°C. Upon delivery aliquot and store at -20°C. Avoid freeze / thaw cycles.
Disclaimer:	This product is for research use only. It is not intended for diagnostic or therapeutic use.

## Anti-CTCF Antibody (A307226)

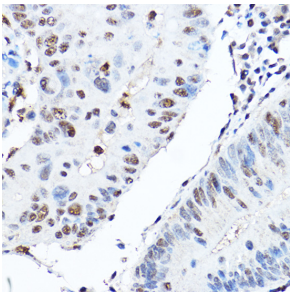
### Images:



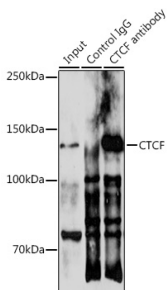
Western blot analysis of extracts from normal (control) and CTCF knockout (KO) 293T cells, using Anti-CTCF Antibody (A307226) at 1:1,000 dilution. The secondary antibody was Goat Anti-Rabbit IgG H&L Antibody (HRP) at 1:10,000 dilution. Lysates/proteins were present at 25µg per lane. The blocking buffer used was 3% non-fat dry milk in TBST. Detection was with a ECL Basic Kit. Exposure time: 10s.



Western blot analysis of extracts of various cell lines, using Anti-CTCF Antibody (A307226) at 1:500 dilution. The secondary antibody was Goat Anti-Rabbit IgG H&L Antibody (HRP) at 1:10,000 dilution. Lysates/proteins were present at 25µg per lane. The blocking buffer used was 3% non-fat dry milk in TBST. Detection was with a ECL Basic Kit. Exposure time: 30s.



Immunohistochemistry analysis of paraffin-embedded human colon carcinoma tissue using Anti-CTCF Antibody (A307226) at a dilution of 1:200 (40x lens). Perform high pressure antigen retrieval with 10 mM citrate buffer pH 6.0 before commencing with IHC staining protocol.



Immunoprecipitation analysis of 300µg extracts of 293T cells using 3µg of Anti-CTCF Antibody (A307226). This Western blot was performed on the immunoprecipitate using Anti-CTCF Antibody (A307226) at a dilution of 1:500.