

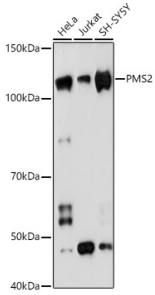
## Anti-PMS2 Antibody [ARC1039] (A307272)

### Specifications:

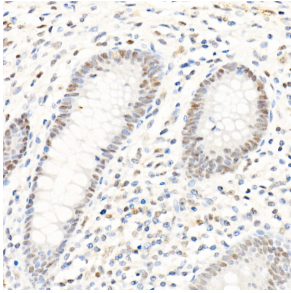
Name:	Anti-PMS2 Antibody [ARC1039]
Description:	Rabbit monoclonal [ARC1039] antibody to PMS2.
Applications:	WB, IHC
Recommended Dilutions:	WB: 1:500-1:1,000, IHC: 1:50-1:200
Reactivity:	Human
Immunogen:	A synthetic peptide corresponding to a sequence within amino acids 1-100 of human PMS2 (P54278).
Sequence:	MERAESSSTEPAKAIKPIDRKSVMHQICSGQVLSLSTAVKELVENS LDAGATNIDLKL KDYGVDLIEVSDNGCGVEEENFEGLTLKHHTSKIQEFADLTQ
Host:	Rabbit
Clonality:	Monoclonal
Clone ID:	ARC1039
Isotype:	IgG
Conjugate:	Unconjugated
Purification:	Affinity purification.
Molecular Weight:	110 kDa
Product Form:	Liquid
Formulation:	Supplied in Phosphate Buffered Saline, pH 7.3, with 50% Glycerol, 0.05% BSA, and 0.02% Sodium Azide.
Storage:	Shipped at 4°C. Upon delivery aliquot and store at -20°C. Avoid freeze / thaw cycles.
Disclaimer:	This product is for research use only. It is not intended for diagnostic or therapeutic use.

## Anti-PMS2 Antibody [ARC1039] (A307272)

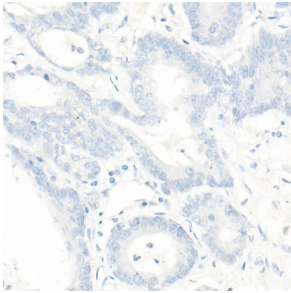
### Images:



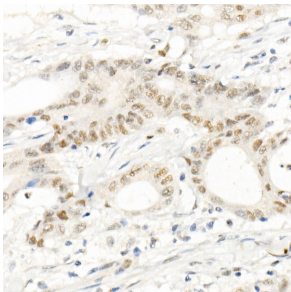
Western blot analysis of extracts of various cell lines, using Anti-PMS2 Antibody [ARC1039] (A307272) at 1:1,000 dilution. The secondary antibody was Goat Anti-Rabbit IgG H&L Antibody (HRP) at 1:10,000 dilution. Lysates/proteins were present at 25 $\mu$ g per lane. The blocking buffer used was 3% non-fat dry milk in TBST. Detection was with a ECL Basic Kit. Exposure time: 90s.



Immunohistochemistry analysis of paraffin-embedded human appendix tissue using Anti-PMS2 Antibody [ARC1039] (A307272) at a dilution of 1:100(40x lens). Perform high pressure antigen retrieval with 10 mM citrate buffer pH 6.0 before commencing with IHC staining protocol.



Immunohistochemistry analysis of paraffin-embedded human colon cancer loss of PMS2 expression (negative control samples) using Anti-PMS2 Antibody [ARC1039] (A307272) at a dilution of 1:100(40x lens). Perform high pressure antigen retrieval with 10 mM citrate buffer pH 6.0 before commencing with IHC staining protocol.



Immunohistochemistry analysis of paraffin-embedded human colon carcinoma tissue using Anti-PMS2 Antibody [ARC1039] (A307272) at a dilution of 1:100(40x lens). Perform high pressure antigen retrieval with 10 mM citrate buffer pH 6.0 before commencing with IHC staining protocol.