

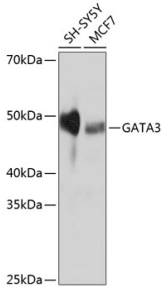
## Anti-GATA3 Antibody [ARC0115] (A307313)

### Specifications:

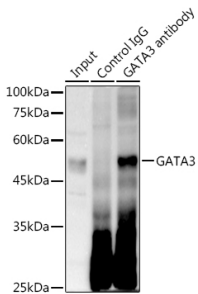
Name:	Anti-GATA3 Antibody [ARC0115]
Description:	Rabbit monoclonal [ARC0115] antibody to GATA3.
Applications:	WB, IP, ChIP
Recommended Dilutions:	WB: 1:500-1:2,000, IP: 1:100-1:500, ChIP: 1:100-1:500
Reactivity:	Human, Mouse
Immunogen:	Recombinant fusion protein containing a sequence corresponding to amino acids 1-200 of human GATA3 (P23771).
Sequence:	MEVTADQPRWVSHHHPAVLNGQHPDTHHPGLSHSYMDAAQYPLPEEVDVLFNIDGQGN HVPPYYGNSVRATVQRYPPTHHGSQVCRPPLLHGSLPWLDGGKALGSHHTASPWNLS FSKTSIHHGSPGPLSVYPPASSSSLSGGHASPFLFTFPPTPPKDVSPDPSLSTPGSAG SARQDEKECLKYQVPLPDSMKLESSH
Host:	Rabbit
Clonality:	Monoclonal
Clone ID:	ARC0115
Isotype:	IgG
Conjugate:	Unconjugated
Purification:	Affinity purification.
Molecular Weight:	48 kDa
Product Form:	Liquid
Formulation:	Supplied in Phosphate Buffered Saline, pH 7.3, with 50% Glycerol, 0.05% BSA, and 0.02% Sodium Azide.
Storage:	Shipped at 4°C. Upon delivery aliquot and store at -20°C. Avoid freeze / thaw cycles.
Disclaimer:	This product is for research use only. It is not intended for diagnostic or therapeutic use.

## Anti-GATA3 Antibody [ARC0115] (A307313)

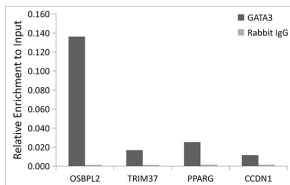
### Images:



Western blot analysis of extracts of various cell lines, using Anti-GATA3 Antibody [ARC0115] (A307313) at 1:1,000 dilution. The secondary antibody was Goat Anti-Rabbit IgG H&L Antibody (HRP) at 1:10,000 dilution. Lysates/proteins were present at 25µg per lane. The blocking buffer used was 3% non-fat dry milk in TBST. Detection was with a ECL Basic Kit. Exposure time: 10s.



Immunoprecipitation analysis of 300µg extracts of Jurkat cells using 3µg of Anti-GATA3 Antibody [ARC0115] (A307313). This Western blot was performed on the immunoprecipitate using Anti-GATA3 Antibody [ARC0115] (A307313) at a dilution of 1:500.



Chromatin immunoprecipitation (ChIP) analysis of extracts of MCF7 cells, using Anti-GATA3 Antibody [ARC0115] (A307313) and Rabbit IgG. The amount of immunoprecipitated DNA was checked by quantitative PCR. Histogram was constructed by the ratios of the immunoprecipitated DNA to the input.