

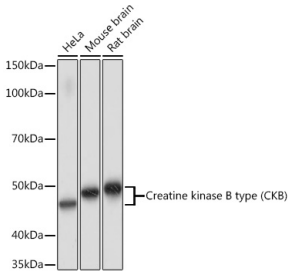
## Anti-Creatine Kinase MB Antibody [ARC1990] (A307604)

### Specifications:

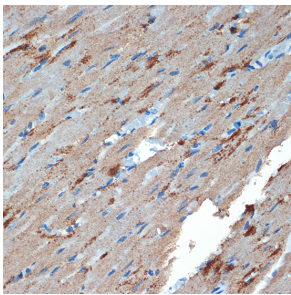
Name:	Anti-Creatine Kinase MB Antibody [ARC1990]
Description:	Rabbit monoclonal [ARC1990] antibody to Creatine Kinase MB.
Applications:	WB, IHC
Recommended Dilutions:	WB: 1:500-1:2,000, IHC: 1:50-1:200
Reactivity:	Human, Mouse, Rat
Immunogen:	A synthetic peptide corresponding to a sequence within amino acids 1-100 of human Creatine kinase B type (CKB) (P12277).
Sequence:	MPFSNSHNALKLRFPAEDEFPDLSAHNNHMAKVLTPELYAELRAKSTPSGFTLDDVIQ TGVDNPGHPYIMTVGCVAGDEESYEVFKDLFDPIIEDRHGGY
Host:	Rabbit
Clonality:	Monoclonal
Clone ID:	ARC1990
Isotype:	IgG
Conjugate:	Unconjugated
Purification:	Affinity purification.
Molecular Weight:	45 kDa
Product Form:	Liquid
Formulation:	Supplied in Phosphate Buffered Saline, pH 7.3, with 50% Glycerol, 0.05% BSA, and 0.02% Sodium Azide.
Storage:	Shipped at 4°C. Upon delivery aliquot and store at -20°C. Avoid freeze / thaw cycles.
Disclaimer:	This product is for research use only. It is not intended for diagnostic or therapeutic use.

## Anti-Creatine Kinase MB Antibody [ARC1990] (A307604)

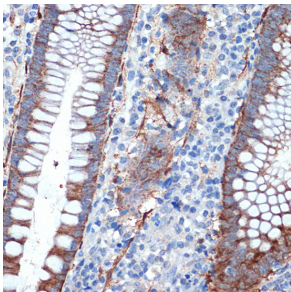
### Images:



Western blot analysis of extracts of various cell lines, using Anti-Creatine Kinase MB Antibody [ARC1990] (A307604) at 1:1,000 dilution. The secondary antibody was Goat Anti-Rabbit IgG H&L Antibody (HRP) at 1:10,000 dilution. Lysates/proteins were present at 25µg per lane. The blocking buffer used was 3% non-fat dry milk in TBST. Detection was with a ECL Basic Kit. Exposure time: 90s.



Immunohistochemistry analysis of paraffin-embedded rat heart using Anti-Creatine Kinase MB Antibody [ARC1990] (A307604) at a dilution of 1:100 (40x lens). Perform microwave antigen retrieval with 10 mM Tris/EDTA buffer pH 9.0 before commencing with IHC staining protocol.



Immunohistochemistry analysis of paraffin-embedded human appendix tissue using Anti-Creatine Kinase MB Antibody [ARC1990] (A307604) at a dilution of 1:100 (40x lens). Perform microwave antigen retrieval with 10 mM Tris/EDTA buffer pH 9.0 before commencing with IHC staining protocol.