

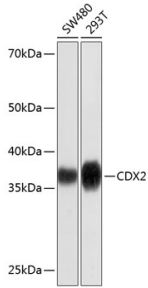
Anti-CDX2 Antibody [ARC0450] (A308015)

Specifications:

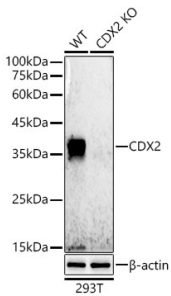
Name:	Anti-CDX2 Antibody [ARC0450]
Description:	Rabbit monoclonal [ARC0450] antibody to CDX2.
Applications:	WB, IHC, ICC/IF, IP
Recommended Dilutions:	WB: 1:100-1:500, IHC: 1:100-1:500, ICC/IF: 1:50-1:200, IP: 1:100-1:500
Reactivity:	Human, Mouse
Immunogen:	A synthetic peptide corresponding to a sequence within amino acids 1-100 of human CDX2 (Q99626).
Sequence:	MYVSYLLDKDVSMYPSSVRHSGGLNLAPQNFVSPQYPDYGGYHVAAAAAAAAANLDSA QSPGPSWPAAYGAPLREDWNGYAPGGAAAAANAVAHGLNGGS
Host:	Rabbit
Clonality:	Monoclonal
Clone ID:	ARC0450
Isotype:	IgG
Conjugate:	Unconjugated
Purification:	Affinity purification.
Molecular Weight:	38 kDa
Product Form:	Liquid
Formulation:	Supplied in Phosphate Buffered Saline, pH 7.3, with 50% Glycerol, 0.05% BSA, and 0.02% Sodium Azide.
Storage:	Shipped at 4°C. Upon delivery aliquot and store at -20°C. Avoid freeze / thaw cycles.
Disclaimer:	This product is for research use only. It is not intended for diagnostic or therapeutic use.

Anti-CDX2 Antibody [ARC0450] (A308015)

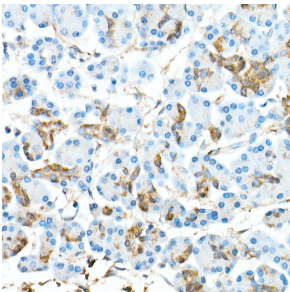
Images:



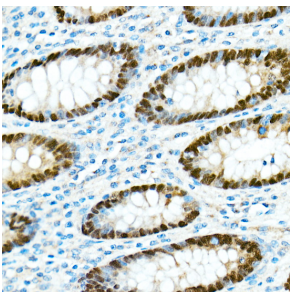
Western blot analysis of extracts of various cell lines, using Anti-CDX2 Antibody [ARC0450] (A308015) at 1:1,000 dilution. The secondary antibody was Goat Anti-Rabbit IgG H&L Antibody (HRP) at 1:10,000 dilution. Lysates/proteins were present at 25µg per lane. The blocking buffer used was 3% non-fat dry milk in TBST. Detection was with a ECL Basic Kit. Exposure time: 3min.



Western blot analysis of extracts from wild type(WT) and CDX2 knockout (KO) 293T cells, using Anti-CDX2 Antibody [ARC0450] (A308015) at 1:500 dilution. The secondary antibody was Goat Anti-Rabbit IgG H&L Antibody (HRP) at 1:10,000 dilution. Lysates/proteins were present at 25µg per lane. The blocking buffer used was 3% non-fat dry milk in TBST. Detection was with a ECL Basic Kit. Exposure time: 30s.



Immunohistochemistry analysis of paraffin-embedded human pancreas using Anti-CDX2 Antibody [ARC0450] (A308015) at a dilution of 1:300 (40x lens). Perform microwave antigen retrieval with 10 mM PBS buffer pH 7.2 before commencing with IHC staining protocol.



Immunohistochemistry analysis of paraffin-embedded human appendix tissue using Anti-CDX2 Antibody [ARC0450] (A308015) at a dilution of 1:300 (40x lens). Perform microwave antigen retrieval with 10 mM PBS buffer pH 7.2 before commencing with IHC staining protocol.