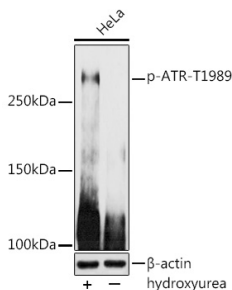


Anti-ATR (phospho Thr1989) Antibody (A308032)

Specifications:

Name:	Anti-ATR (phospho Thr1989) Antibody
Description:	Rabbit polyclonal antibody to ATR (phospho Thr1989).
Applications:	WB, IHC
Recommended Dilutions:	WB: 1:500-1:1,000, IHC: 1:50-1:200
Reactivity:	Human, Mouse, Rat
Immunogen:	A synthetic phosphorylated peptide around T1989 of human ATR (NP_001175.2).
Sequence:	NETPP
Host:	Rabbit
Clonality:	Polyclonal
Isotype:	IgG
Conjugate:	Unconjugated
Purification:	Affinity purification.
Molecular Weight:	300 kDa
Product Form:	Liquid
Formulation:	Supplied in Phosphate Buffered Saline, pH 7.3, with 50% Glycerol and 0.05% Proclin 300.
Storage:	Shipped at 4°C. Upon delivery aliquot and store at -20°C. Avoid freeze / thaw cycles.
Disclaimer:	This product is for research use only. It is not intended for diagnostic or therapeutic use.

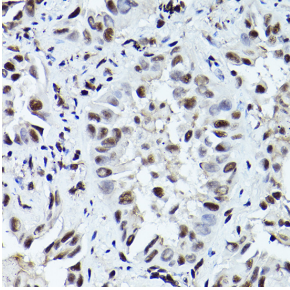
Images:



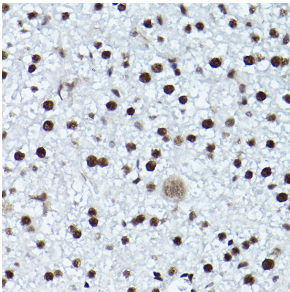
Western blot analysis of extracts of HeLa cells, using Anti-ATR (phospho Thr1989) Antibody (A308032) at 1:1,000 dilution. HeLa cells were treated by Hydroxyurea (4 mM) at 37°C for 20 hours. The secondary antibody was Goat Anti-Rabbit IgG H&L Antibody (HRP) at 1:10,000 dilution. Lysates/proteins were present at 25µg per lane. The blocking buffer used was 3% non-fat dry milk in TBST. Detection was with a ECL Basic Kit. Exposure time: 180s.

Anti-ATR (phospho Thr1989) Antibody (A308032)

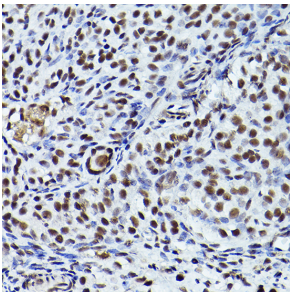
Images continued:



Immunohistochemistry analysis of paraffin-embedded human lung cancer using Anti-ATR (phospho Thr1989) Antibody (A308032) at a dilution of 1:200 (40x lens). Perform high pressure antigen retrieval with 10 mM citrate buffer pH 6.0 before commencing with IHC staining protocol.



Immunohistochemistry analysis of paraffin-embedded mouse liver using Anti-ATR (phospho Thr1989) Antibody (A308032) at a dilution of 1:200 (40x lens). Perform high pressure antigen retrieval with 10 mM citrate buffer pH 6.0 before commencing with IHC staining protocol.



Immunohistochemistry analysis of paraffin-embedded rat ovary using Anti-ATR (phospho Thr1989) Antibody (A308032) at a dilution of 1:200 (40x lens). Perform high pressure antigen retrieval with 10 mM citrate buffer pH 6.0 before commencing with IHC staining protocol.