

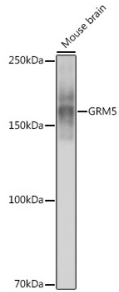
Anti-Metabotropic Glutamate Receptor 5 Antibody [ARC0250] (A308176)

Specifications:

Name:	Anti-Metabotropic Glutamate Receptor 5 Antibody [ARC0250]
Description:	Rabbit monoclonal [ARC0250] antibody to Metabotropic Glutamate Receptor 5.
Applications:	WB
Recommended Dilutions:	WB: 1:500-1:2,000
Reactivity:	Mouse, Rat
Immunogen:	A synthetic peptide corresponding to a sequence within amino acids 1100-1200 of human GRM5 (P41594).
Sequence:	PKEIQLPTTMTTFAEIQPLPAIEVTGGAQPAAGAQAAGDAARESPAAGPEAAAAKPDLEELVALTPPSPFRDSVDSGSTTPNSPVSEALCIPSSPKYDTL
Host:	Rabbit
Clonality:	Monoclonal
Clone ID:	ARC0250
Isotype:	IgG
Conjugate:	Unconjugated
Purification:	Affinity purification.
Molecular Weight:	150 kDa
Product Form:	Liquid
Formulation:	Supplied in Phosphate Buffered Saline, pH 7.3, with 50% Glycerol, 0.05% BSA, and 0.02% Sodium Azide.
Storage:	Shipped at 4°C. Upon delivery aliquot and store at -20°C. Avoid freeze / thaw cycles.
Disclaimer:	This product is for research use only. It is not intended for diagnostic or therapeutic use.

Anti-Metabotropic Glutamate Receptor 5 Antibody [ARC0250] (A308176)

Images:



Western blot analysis of extracts of Mouse brain, using Anti-Metabotropic Glutamate Receptor 5 Antibody [ARC0250] (A308176) at 1:1,000 dilution. The secondary antibody was Goat Anti-Rabbit IgG H&L Antibody (HRP) at 1:10,000 dilution. Lysates/proteins were present at 25 μ g per lane. The blocking buffer used was 3% non-fat dry milk in TBST. Detection was with a ECL Basic Kit. Exposure time: 30s.