

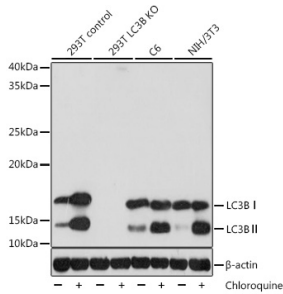
Anti-LC3B Antibody [ARC0144] (A308244)

Specifications:

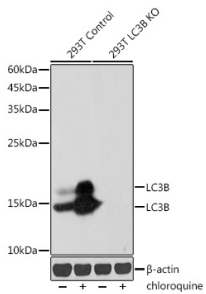
Name:	Anti-LC3B Antibody [ARC0144]
Description:	Rabbit monoclonal [ARC0144] antibody to LC3B.
Applications:	WB, IHC, ICC/IF, IP
Recommended Dilutions:	WB: 1:500-1:1,000, IHC: 1:50-1:200, ICC/IF: 1:50-1:200, IP: 1:500-1:1,000
Reactivity:	Human, Mouse, Rat
Immunogen:	Recombinant fusion protein containing a sequence corresponding to amino acids 2-107 of human LC3B (Q9GZQ8).
Sequence:	PSEKTFKQRRTFEQRVEDVRLIREQHPTKIPVIIERYKGEKQLPVLDTKTKFLVPDHVN MSELIKIIRRLQLNANQAFFLLVNGHSMVSVSTPISEVYESEKDEDG
Host:	Rabbit
Clonality:	Monoclonal
Clone ID:	ARC0144
Isotype:	IgG
Conjugate:	Unconjugated
Purification:	Affinity purification.
Molecular Weight:	14 kDa / 16 kDa
Product Form:	Liquid
Formulation:	Supplied in Phosphate Buffered Saline, pH 7.3, with 50% Glycerol, 0.05% BSA, and 0.05% Proclin 300.
Storage:	Shipped at 4°C. Upon delivery aliquot and store at -20°C. Avoid freeze / thaw cycles.
Disclaimer:	This product is for research use only. It is not intended for diagnostic or therapeutic use.

Anti-LC3B Antibody [ARC0144] (A308244)

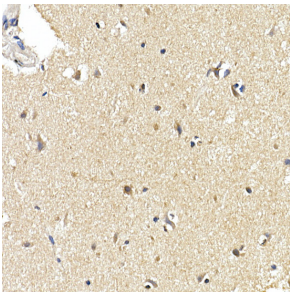
Images:



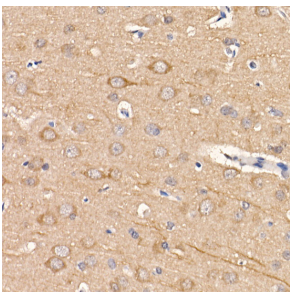
Western blot analysis of extracts of various lysates, using Anti-LC3B Antibody [ARC0144] (A308244) at 1:1,000 dilution. 293T, C6 and NIH/3T3 cells were treated by Chloroquine (50 μ M) at 37°C for 20 hours. The secondary antibody was Goat Anti-Rabbit IgG H&L Antibody (HRP) at 1:10,000 dilution. Lysates/proteins were present at 25 μ g per lane. The blocking buffer used was 3% non-fat dry milk in TBST. Detection was with a ECL Basic Kit. Exposure time: 5s.



Western blot analysis of extracts from wild type(WT) and LKB1 knockout (KO) 293T cells, using Anti-LC3B Antibody [ARC0144] (A308244) at 1:1,000 dilution. The secondary antibody was Goat Anti-Rabbit IgG H&L Antibody (HRP) at 1:10,000 dilution. Lysates/proteins were present at 25 μ g per lane. The blocking buffer used was 3% non-fat dry milk in TBST. Detection was with a ECL Basic Kit. Exposure time: 30s.



Immunohistochemistry analysis of paraffin-embedded human brain tissue using Anti-LC3B Antibody [ARC0144] (A308244) at a dilution of 1:100(40x lens). Perform high pressure antigen retrieval with 10 mM citrate buffer pH 6.0 before commencing with IHC staining protocol.



Immunohistochemistry analysis of paraffin-embedded rat brain using Anti-LC3B Antibody [ARC0144] (A308244) at a dilution of 1:100(40x lens). Perform high pressure antigen retrieval with 10 mM citrate buffer pH 6.0 before commencing with IHC staining protocol.