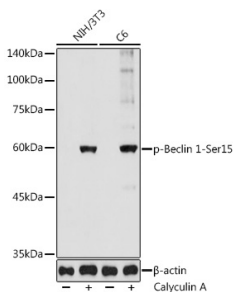


# Anti-Beclin 1 (phospho Ser15) Antibody (A308398)

## Specifications:

Name:	Anti-Beclin 1 (phospho Ser15) Antibody
Description:	Rabbit polyclonal antibody to Beclin 1 (phospho Ser15).
Applications:	WB
Recommended Dilutions:	WB: 1:100-1:500
Reactivity:	Human, Mouse, Rat
Immunogen:	A synthetic phosphorylated peptide around S15 of human Beclin 1 (NP_003757.1).
Sequence:	QVSFV
Host:	Rabbit
Clonality:	Polyclonal
Isotype:	IgG
Conjugate:	Unconjugated
Purification:	Affinity purification.
Molecular Weight:	60 kDa
Product Form:	Liquid
Formulation:	Supplied in Phosphate Buffered Saline, pH 7.3, with 50% Glycerol and 0.05% Proclin 300.
Storage:	Shipped at 4°C. Upon delivery aliquot and store at -20°C. Avoid freeze / thaw cycles.
Disclaimer:	This product is for research use only. It is not intended for diagnostic or therapeutic use.

## Images:



Western blot analysis of extracts of various cell lines, using Anti-Beclin 1 (phospho Ser15) Antibody (A308398) at 1:500 dilution. NIH/3T3 and C6 cells were treated by Calyculin A (100 nM) at 37°C for 30 minutes after serum-starvation overnight. The secondary antibody was Goat Anti-Rabbit IgG H&L Antibody (HRP) at 1:10,000 dilution. Lysates/proteins were present at 25µg per lane. The blocking buffer used was 3% non-fat dry milk in TBST. Detection was with a ECL Basic Kit. Exposure time: 30s.