

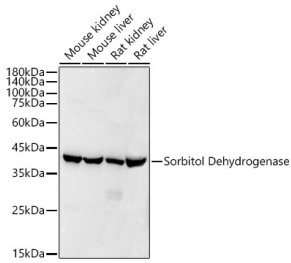
## Anti-Sorbitol Dehydrogenase Antibody [ARC53945] (A308433)

### Specifications:

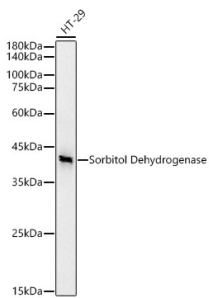
Name:	Anti-Sorbitol Dehydrogenase Antibody [ARC53945]
Description:	Rabbit monoclonal [ARC53945] antibody to Sorbitol Dehydrogenase.
Applications:	WB
Recommended Dilutions:	WB: 1:2,000-1:20,000
Reactivity:	Human, Mouse, Rat
Immunogen:	A synthetic peptide corresponding to a sequence within amino acids 100-200 of human Sorbitol Dehydrogenase (NP_003095.2).
Sequence:	RENDEFCKMGRYNLSPSIFFCATPPDDGNLCRFYKHNAAFICYKLPDNTFEEGALIEP LSVGIHACRRGGVTLGHKVLVCGAGPIGMVTLVAKAMGAAQV
Host:	Rabbit
Clonality:	Monoclonal
Clone ID:	ARC53945
Isotype:	IgG
Conjugate:	Unconjugated
Purification:	Affinity purification.
Molecular Weight:	38 kDa
Product Form:	Liquid
Formulation:	Supplied in Phosphate Buffered Saline, pH 7.3, with 50% Glycerol, 0.05% BSA, and 0.05% Proclin 300.
Storage:	Shipped at 4°C. Upon delivery aliquot and store at -20°C. Avoid freeze / thaw cycles.
Disclaimer:	This product is for research use only. It is not intended for diagnostic or therapeutic use.

## Anti-Sorbitol Dehydrogenase Antibody [ARC53945] (A308433)

### Images:



Western blot analysis of extracts of various cell lines, using Anti-Sorbitol Dehydrogenase Antibody [ARC53945] (A308433) at 1:20,000 dilution. The secondary antibody was Goat Anti-Rabbit IgG H&L Antibody (HRP) at 1:10,000 dilution. Lysates/proteins were present at 25µg per lane. The blocking buffer used was 3% non-fat dry milk in TBST. Detection was with a ECL Basic Kit. Exposure time: 10s.



Western blot analysis of extracts of HT-29 cells, using Anti-Sorbitol Dehydrogenase Antibody [ARC53945] (A308433) at 1:20,000 dilution. The secondary antibody was Goat Anti-Rabbit IgG H&L Antibody (HRP) at 1:10,000 dilution. Lysates/proteins were present at 25µg per lane. The blocking buffer used was 3% non-fat dry milk in TBST. Detection was with a ECL Basic Kit. Exposure time: 30s.